

**BROTHER DePAUL
COSTELLO, O.S.F.**

B.A., History
St. George Academy

EUGENE ALOYSIUS DALY

B.B.A., Accounting
St. Augustine's Diocesan High School
Association of Evening Students 1, 2,
3, 4, Board of Governors 2, Vice Presi-
dent 3; Loyalty Fund Captain 3.



**PETER PATRICK
CRISTALLO**

B.B.A., Business Management
Bishop Loughlin Memorial
High School

Who's Who Among Students in Amer-
ican Colleges and Universities; Intra-
murals 1, 2, 3, 4; Business Club 1, 2,
3, President 4; I.R.C. 1, 2, 3, 4; Dean's
List 3; Soph-Frosh Hop Committee;
Loyalty Fund Captain 3; Young Dem-
ocrats 3; Bowling 3; Rifle Club 4;
Senior Prom Co-Chairman; Francis-
can Business Staff 4; Student Group
Leader 4.

THOMAS MARTIN DAY

B.B.A., Business Management
St. Francis Preparatory
Intramurals 1, 2, 3, 4; Gaelic Society
1, 2, 3, 4; Business Club 1, 2, 4; I.R.C.
1; Phi Rho Pi Fraternity 2, 3, 4.



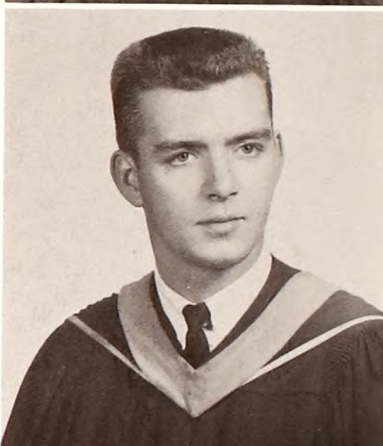
JOHN OLIVER CRYAN

B.B.A., Business Management
Bishop Loughlin Memorial
High School

Business Club 1, 2, 3, 4; Gaelic Society
2, 3, 4; Intramurals 1, 2, 3, 4; Young
Republicans 3.

ANTHONY JOSEPH DEACY

B.B.A., Business Management
Power Memorial Academy
Business Club 1, 2, 3, 4; Intramurals
1, 2, 3, 4.



**EDWARD FRANCIS
CULLEN**

B.A., History
St. Francis Preparatory
Gaelic Society President 1; I.R.C. 1;
Student Publicists 1; Veterans Club 1.

**SALVATORE PAUL
DiBIANCA**

B.S., Chemistry
St. Peter's High School
Science Club 1, 2, 4; Student Group
Leader 4; Campus Tones 1, Secretary
2, President 3, 4, Band Leader 3, 4.

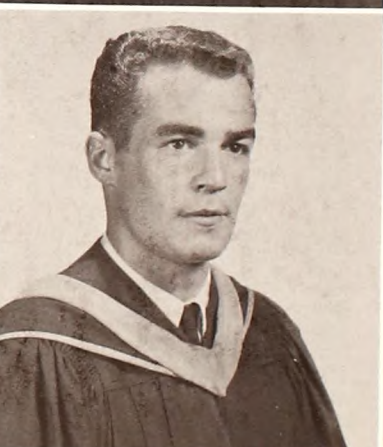


**KENNETH JOSEPH
CUMMINGS**

B.B.A., Business Management
St. Francis Preparatory
Basketball 1; Intramurals 1, 2, 3, 4;
I.R.C. 2, 3; Business Club 1, 2, 3, 4;
Gaelic Society 1, 2.

**SISTER ST. GEMMA
DILLON, C.S.J.**

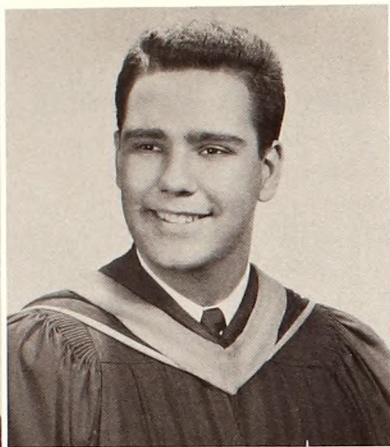
B.A., History
Mary Louise Academy





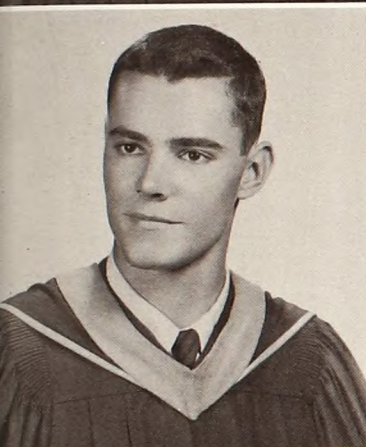
DENNIS JOHN DOHERTY

B.A., Economics
Bishop Loughlin Memorial
High School
Association of Evening Students 1,
2, 3, 4.



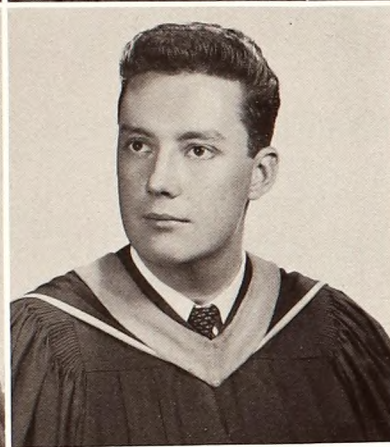
ANTHONY PETER DURAN

B.S., Biology
St. Francis Preparatory
Who's Who Among Students in Amer-
ican Colleges and Universities; Fran-
ciscan Spirit Award 3; Dean's List 1;
Student Council 2, 3, Treasurer 4;
Humanities Club 1, Treasurer 2, Sec-
retary 3, Vice President 4; I.R.C. 1, 2,
3, 4; A.I.R.C. Convention 1, 2, 4;
C.C.U.N. Membership Chairman 3, 4;
N.F.C.C.S. 3, 4; Science Club 2, 3, 4;
Troupers 1, 2; Gaelic Society 2; Stu-
dent Group Leader 3, 4; Loyalty Fund
Captain 2.



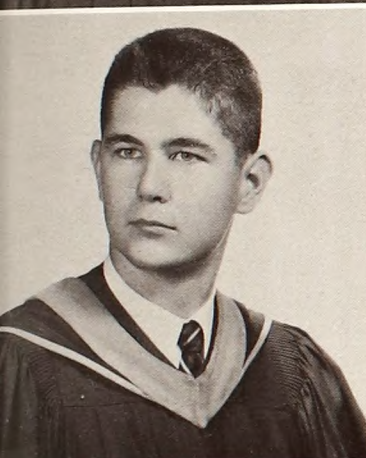
**WILLIAM RAYMOND
DONALDSON**

B.A., Economics
St. Francis Preparatory
Dean's List 1, 3; Philosophy Club 2,
3, 4; Student Group Leader 4; Glee
Club 4.



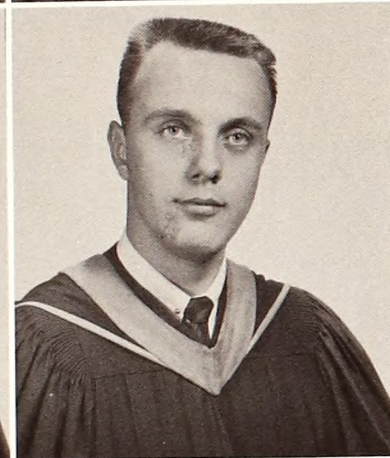
JAMES EDWARD DWANE

B.B.A., Business Management
Delehanty High School
Pi Alpha 2, 3, 4; Loyalty Fund Stew-
ard 3; Business Club 1, 2, 3, 4; Water
Polo 3; I.R.C. 2, 3, 4; Senior Prom
Committee 4; Voice 3; Sociology Club
3, 4; Franciscan 4; Intramurals 3, 4;
High School Convention 2, 3, 4;
Gaelic Society 2, 3; Semper Fi 1.



ROBERT JOHN DONEGAN

B.B.A., Business Management
St. Agnes High School
Business Club 2, 3, Historian 4; Intra-
murals 1.



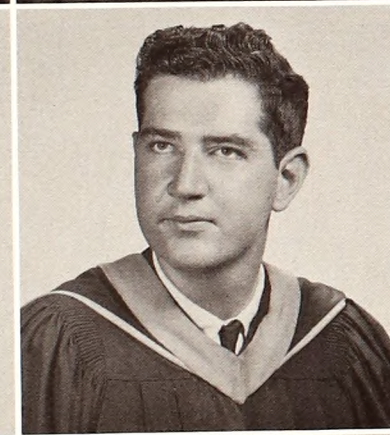
GERARD FRANCIS EGAN

B.S., Biology
Brooklyn Technical High School
Who's Who Among Students in Amer-
ican Colleges and Universities; Dean's
List 1, 2, 3; Junior Class President;
Senior Class President; Franciscan 4;
Student Group Leader 3, 4; I.R.C. 1;
Science Club 1, 2; Intramurals 1, 2;
Loyalty Fund Steward 2.



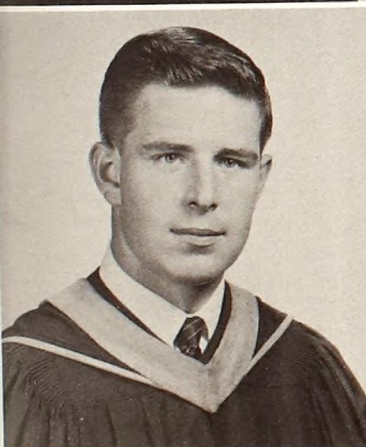
DONALD RAYMOND DREW

B.A., History
La Salle Academy
I.R.C. 1, 2, 3, 4; A.I.R.C. Convention
2; Soph-Frosh Dance Committee 2;
Intramurals 1, 2, 3, 4; Philosophy Club
2, 3, Secretary 4.



JOHN JOSEPH ENRIGHT

B.B.A., Business Management
All Hallows High School
Business Club 1, 2, 3, 4; Intramurals
3, 4; I.R.C. 3, 4; Gaelic Society 3;
Third Order.



JAMES FRANCIS DRIVER

B.B.A., Accounting
Manual Training High School
Association of Evening Students 1,
2, 3, 4.



DONALD JOSEPH ESTERS

B.B.A., Accounting
Bishop Loughlin Memorial
High School
Business Club 3, Secretary 4; Intra-
murals 3, 4; I.R.C. 3, 4; Gaelic Society
3; Third Order.