

Division of Natural



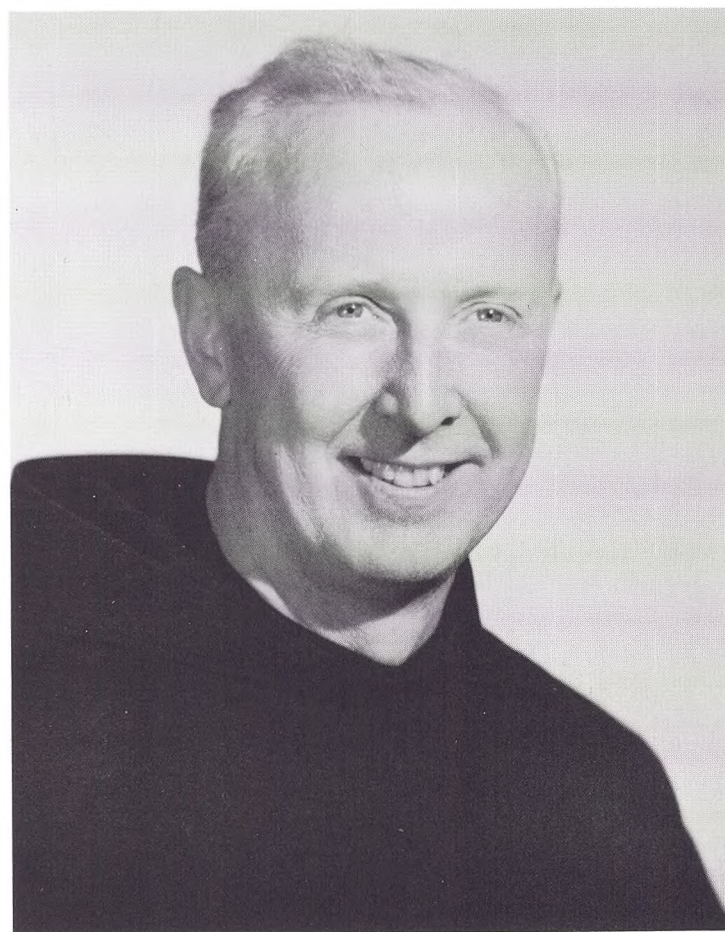
JOHN BURKE

Professor of Chemistry; Chairman, Division of Natural Sciences and Mathematics; B.A., St. Francis College; M.S., New York University; Ph.D., St. John's University.

After the Remsen Street move, the Butler Street campus was left almost entirely to the Division of Natural Science and Mathematics. While plans were formulated to install three or four new laboratories, lectures were given at both centers.

New plans brought new curricula and new teachers. Provision was made for adequate laboratory periods in "Biochemistry," and a supplementary lecture course in "Inorganic Chemistry" was introduced to provide students with a knowledge of recent developments in that field. Dr. Schneider was added to the Chemistry Department, Mr. Von Burg to the Biology Department.

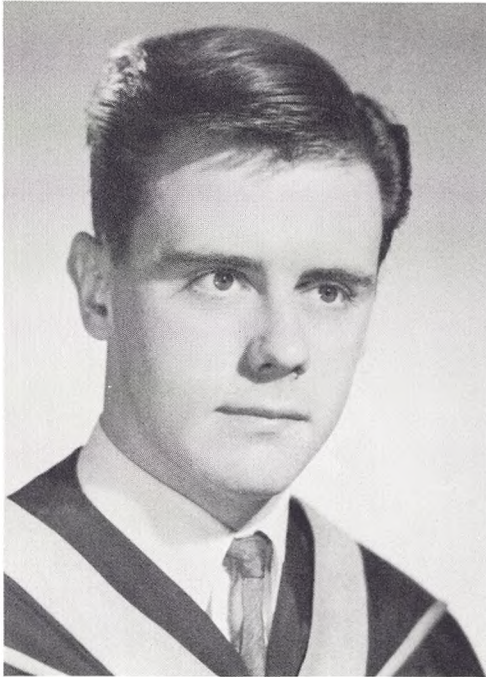
Dr. Metz took leave of his research at the Brookhaven National Laboratories and his classes in "Physical Chemistry" at St. Francis to represent the Atomic Energy Commission in Chile, where he aided scientists in Santiago to install a gamma irradiation facility. On the way back, he stopped off in Cape Canaveral to confer with scientists there, while Dr. Ballantine, a colleague from



BROTHER LEO QUINN, O.S.F.

Professor of Mathematics; Chairman, Department of Mathematics; B.A., St. Francis College; M.A., St. John's University.

BUSINESS GRADUATES Continued



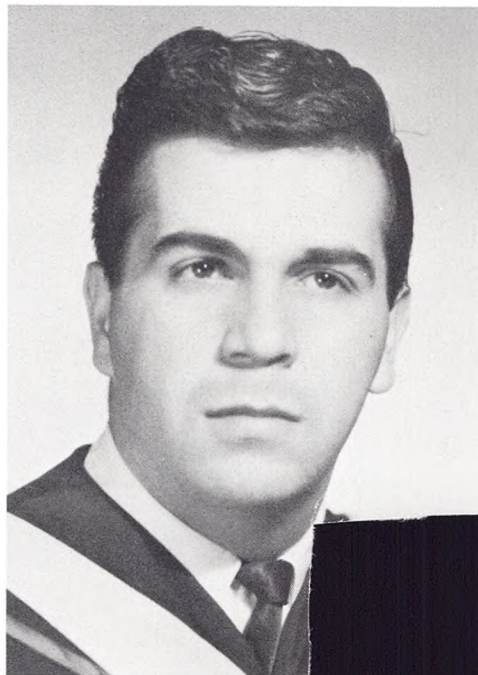
THOMAS WILLIAM ROWAN

B.B.A. Accounting
Bishop Loughlin High School
Business Club 1, 2, 3, 4; Intramurals 2, 3;
Dean's List 3.



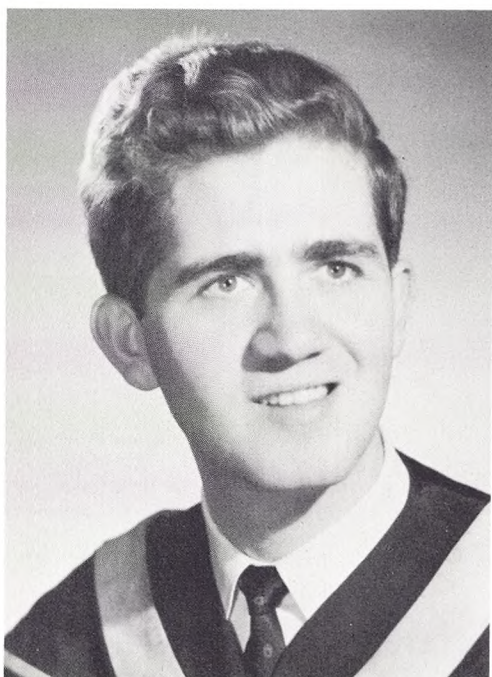
MICHAEL SAVINO

B.B.A. Accounting
Cardinal Hayes High School



JOSEPH ANTHONY

B.B.A. Accounting
Franklin K. Lane High School
Business Club 1, 2, 3, 4.



ANDRE MICHAEL ZMUDA

B.B.A. Accounting
Cardinal Hayes High School
Business Club 1, 2, 3, 4; Omega I
2, 3, 4; Intramurals 1, 2, 3, 4; De
3; I.R.C. 3, 4; Accounting Lab As