



Concert time finally arrived and our hard work was about to pay off.

Glee Club

One of the most active and prominent clubs at St. Francis College is the Glee Club under the able and inspired direction of Prof. Nicholas A. Fiorenza. It is through this group and its participation in many civic and community functions that the public has become aware of St. Francis College and its fine young men. Ground-breaking ceremonies for our new Science Building afforded our friends and neighbors a fine opportunity to see and hear our Glee Club on May 3, 1966. Even the men of the "Dig We Must" group stopped their drilling in the street to watch and listen.

Hard work is the key to the success of the Glee Club. Rehearsals are held twice each week. One hour is spent in the individual rehearsal of each group, that is, First and Second Tenors, Baritones and Basses. The second rehearsal is a ninety minute general practice session putting together the efforts of the voices. It is hard work, and very tiresome to repeat over and over again the same song, particularly if it is one you do not enjoy. But the gay songs and the ones you do well add a note of fun and pleasure and make it all worthwhile.

Nick and the guys look forward each year to the Christmas concert in the Grand Ball Room of the St. George Hotel. Their religious songs and Christmas carols add a note of gaiety to the festivities. The members of the club and their able conductor are particularly happy when their efforts are rewarded with shouts of "More, more," and a standing ovation from their fellow students, faculty and friends.

The first concert of the 1967 season was held on the new campus of Molloy College in Rockville Center. This combined effort of both Glee Clubs was well received by a large and appreciative audience. A dance was held in the Anselma Room of Kellenberg Hall for the combined

clubs and their friends in which many new friendships were formed.

April was a busy month for the Glee Club. A trip to Lakewood, New Jersey, on April 8, resulted in a most enjoyable concert with the young ladies of the Glee Club of Georgian Court College. The following week found our heroes back in New Jersey, South Orange to be exact; to sing a concert with the nurses from Seton Hall School of Nursing. You can be sure many bruised fingers needed nursing care that day. The final Spring concert was held at St. Francis on April 29, this time we were the hosts to the Glee Club of Mount St. Vincent. We hope the young ladies enjoyed the day as much as we did. Also we like to think this was our best concert of the season.

Each year the Glee Club of St. Francis College sings at the Charter Day ceremonies as well as at the induction of new members into the Duns Scotus Honor Society. It is with pride that the Glee Club takes part in honoring the College, as well as those students who worked so diligently to earn membership into Duns Scotus.

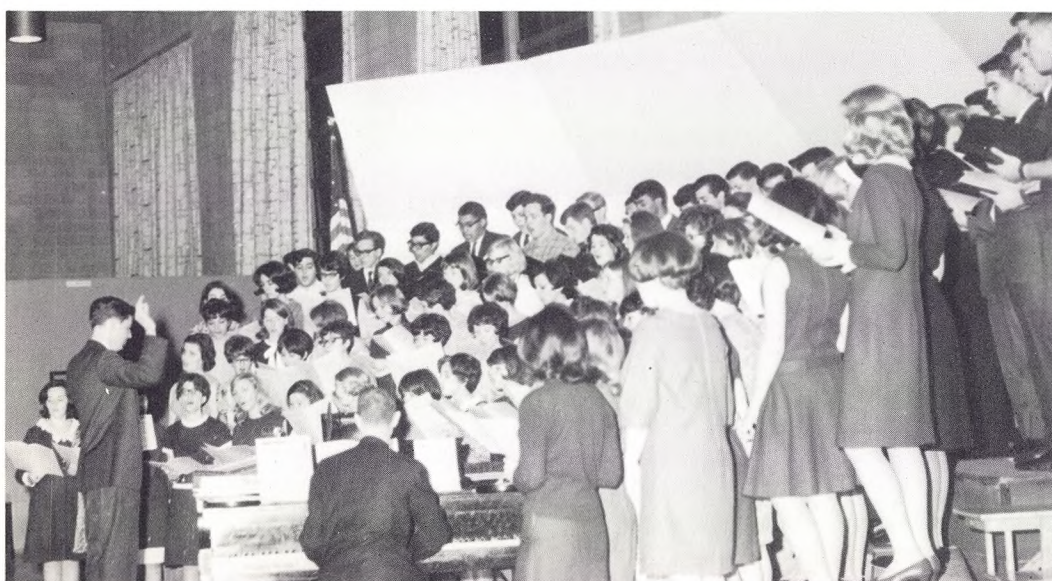
Such a busy schedule means much more than just singing. There are many details to be attended to, including wardrobe, arranging concert dates, transportation, advertising, printing tickets and programs. All these are handled by very capable officers. They and all the members of the Glee Club, as well as Prof. Fiorenza deserve a round of applause for a job well done. All the members are looking forward to the party at the Sky Room of the St. George Hotel at the end of the year. This is an evening of fun and pleasure and also a farewell to those who are soon to graduate and will no longer be members of the Glee Club of St. Francis College.



Prof. Fiorenza directs the Glee Club through one of their medley of songs at Molloy College.



Nick goes through one of the tenor parts individually as the rest of the guys await their turn to sing.



A combined rehearsal with the girls from Molloy College just before the big show.