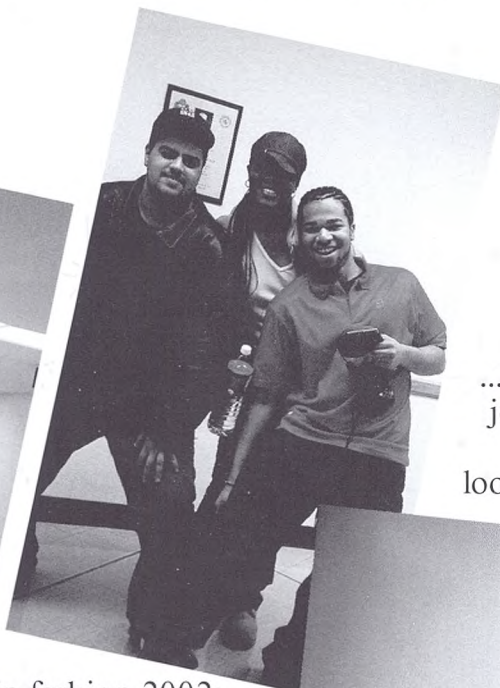
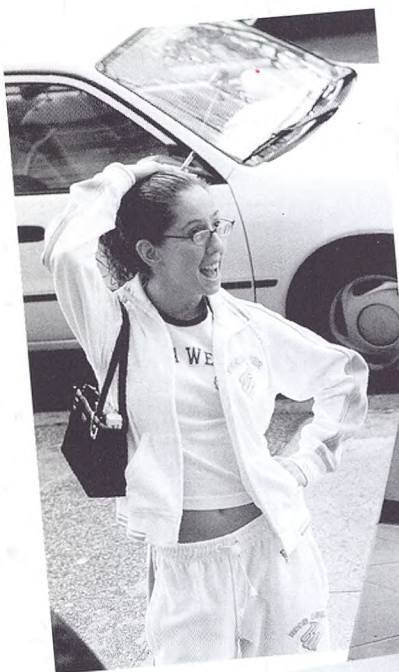
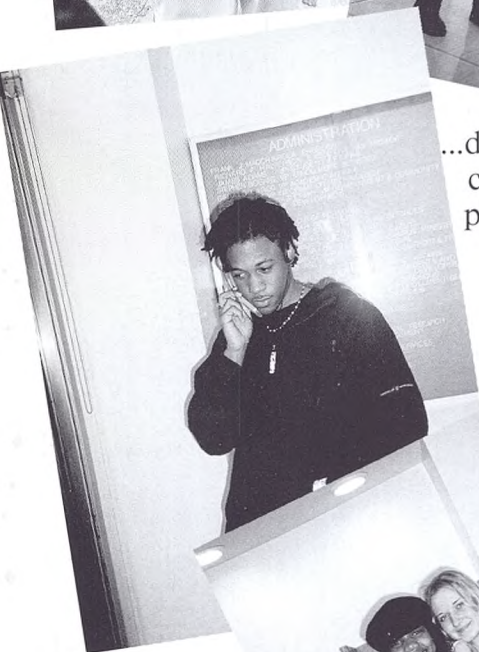


À la mode 2002

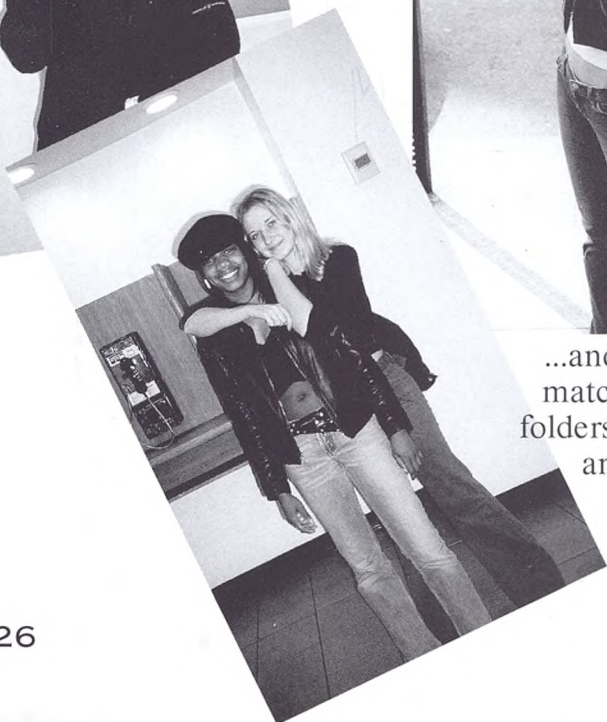
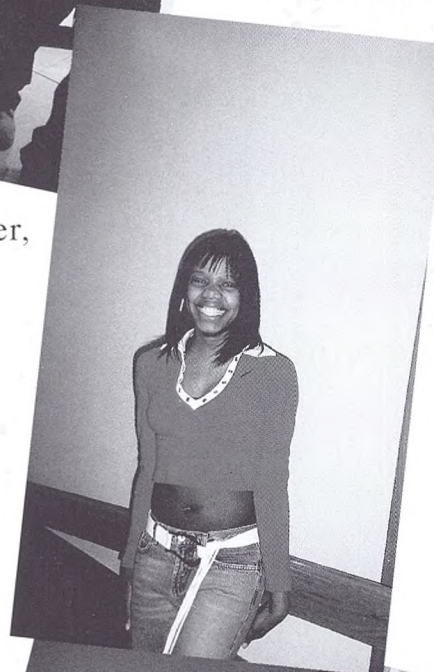
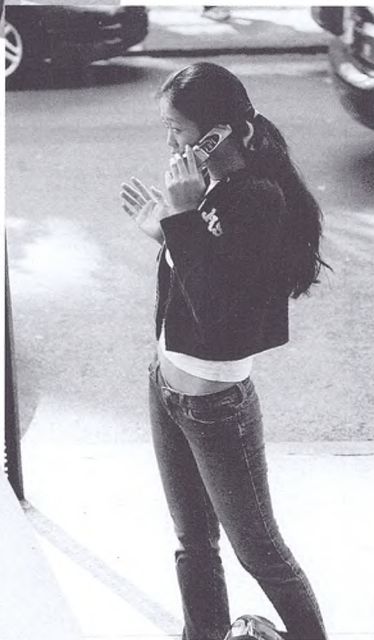


...low waist jeans and funny-looking belts,

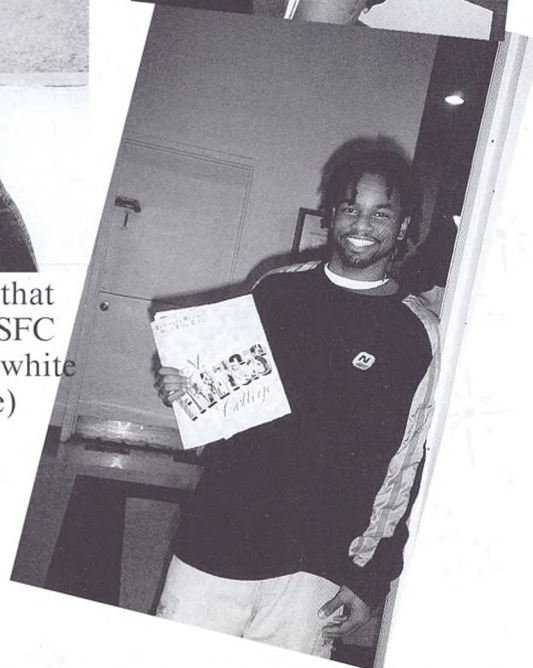
In fashion 2002: personal CD player,



...definitely cellular phones,



...and tops that match the SFC folders (red, white and blue)



Yearbook Editors and Staff

Editor-in-chief: Gina Sandu

Editor Outstanding Seniors: Keri Kitson

Editor Athletics: Alexandra Munteanu

Editors Administration and Faculty:

Alexandra Munteanu and Veronica Jackson

Editor Student Clubs and Organizations:

Kelmara Kelly

*Moderator: William Mallett, Director of Student
Activities and International Student Advisor*

*Photography: Gina Sandu and Alexandra
Munteanu*



Back Row (l to r): Thomas Kehoe (Taylor Publ. rep.), Veronica Jackson, Gina Sandu.
First Row (l to r): William Mallett, Alexandra Munteanu, Kelmara Kelly