

P

I

A

L

P

h

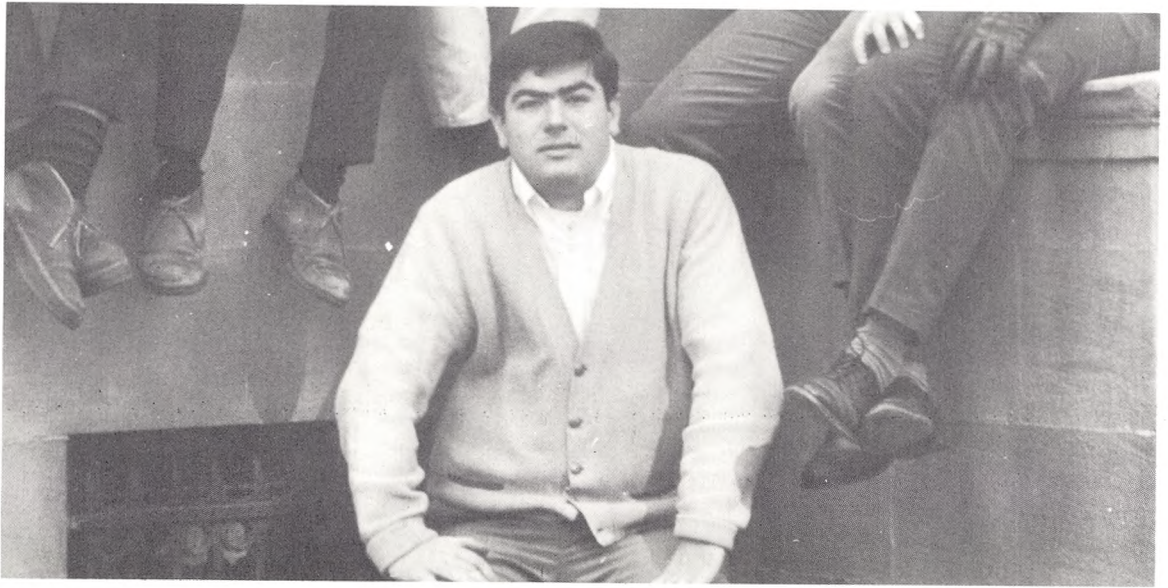
A



Founded in 1906, Pi Alpha Fraternity has become a traditional mainstay at St. Francis College. The academic year of 1967-68 marked a rejuvenated Pi Alpha, a fraternity which fulfilled to an eminent degree its noble aims. That is, the advancement of its members in both scholastic and social endeavors. This task was ably undertaken by its Archon, Tom Dunne.

Pi Alpha is not an ephemeral organization. It is one which grows with the years, and is composed of athletic, studious, and socially minded men. These men will not cease to do their utmost for the honor of Pi Alpha, no matter what fields of endeavor they may enter upon graduation.

The underlying factor of Pi Alpha is its spirit. This spirit is, has been, and will continue to be, an integral part of the traditional spirit of St. Francis College. Through the sixty years of its existence, Pi Alpha has become the essence of the repeated phrase, "For God, country, and St. Francis."



Pi Alpha's leader, Archon Thomas Dunne.

Prof. Fiorenza tries to convince the brothers that girls will come to their dance.







Whenever it's warm the brothers step outside and watch the grass grow.



A scene from the annual Pi Alpha Ball held in New York.