

TRIO OF INVALUABLE TYPISTS



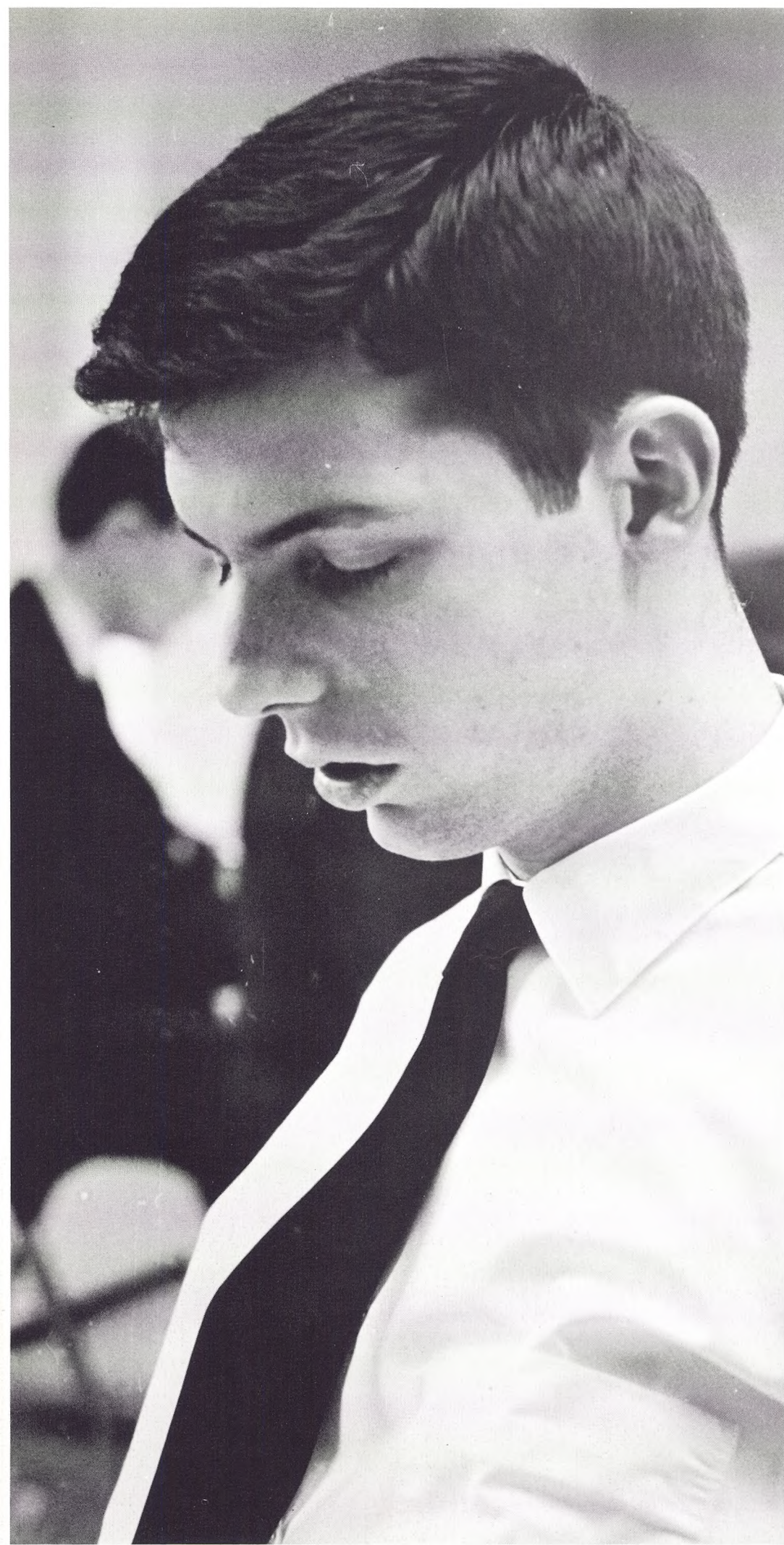
Miss Barbara Zubek



Miss Rosemary Sweeny



Miss Josephine Sloane



Martin R. Hamburger, Editor-in-Chief, caught in pensive mood.

FRANCISCAN STAFF. *Front Row:* Jim Duffield, Joe Skerrett (back to camera), Don McQuade. *Second Row:* Bob Abrami, Martin Hamburger, John Mathis, Berkeley Fleming. *Back Row:* Peter Nulty (Business Manager), Bob DeZorzi, Charlie Measter.



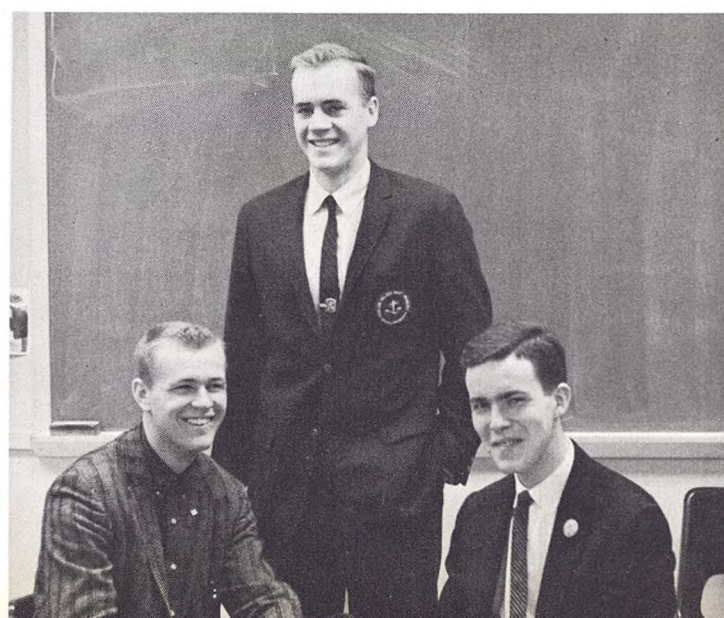
Thomas Swanzey, Peter Nulty, Joe Carabetta, Martin Hamburger, James Duffield, Donald McQuade, Pete Michel.

Who's Who in Colleges

Of course, it was decided in a smoke-filled room. Who would be Who? Student Council Vice President Hugh McMenamin directed the procedure of selecting St. Francis' nominees for the *Who's Who in American Colleges and Universities* directory of 1963.

Thirty-odd applicants, worthies all, we might suppose, were carefully considered by a committee consisting of *Voice* editor Ed Fox, seniors Tom Swanzey and Frank De Caro and Student Council President Bill Spencer, who sat in *ex officio*.

Wishing to avoid the sort of criticism levied upon past choices for the honor, the committee screened every application at least twice. After six hours the decisions had been made. Seventeen students were nominated and later confirmed by the Student Council.



Above: William Spencer, Richard Hoenig, Ray Nash. Below: Gerald Gresck, Charles Harris, James McMenamin.