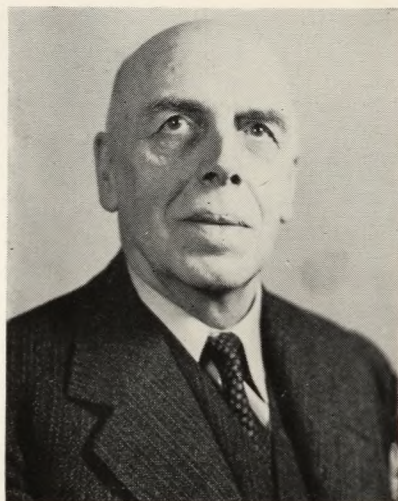


REV. BRO. PASCAL, O.S.F., M.A.  
*Chairman, Departments of Phi-  
losophy and Psychology*



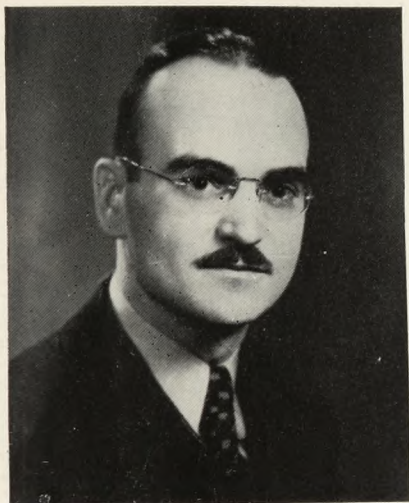
OTTO PFEIFFENBERGER, LL.D.  
*Department of Modern  
Languages*

LUIGI PROVASOLI, PH.D.  
*Department of Biology*



PAUL G. RYAN, M.A.  
*Chairman, Department of  
Education*





WILLIAM E. SCHWENDEMAN, M.A.  
*Chairman, Department of  
 English*



WALTER L. SMITH, B.A.  
*Department of Biology*

REV. ALFRED A. VARRIALE, B.A.  
*Department of Religion*



HARRY WECHSLER, M.S.  
*Department of Chemistry*

