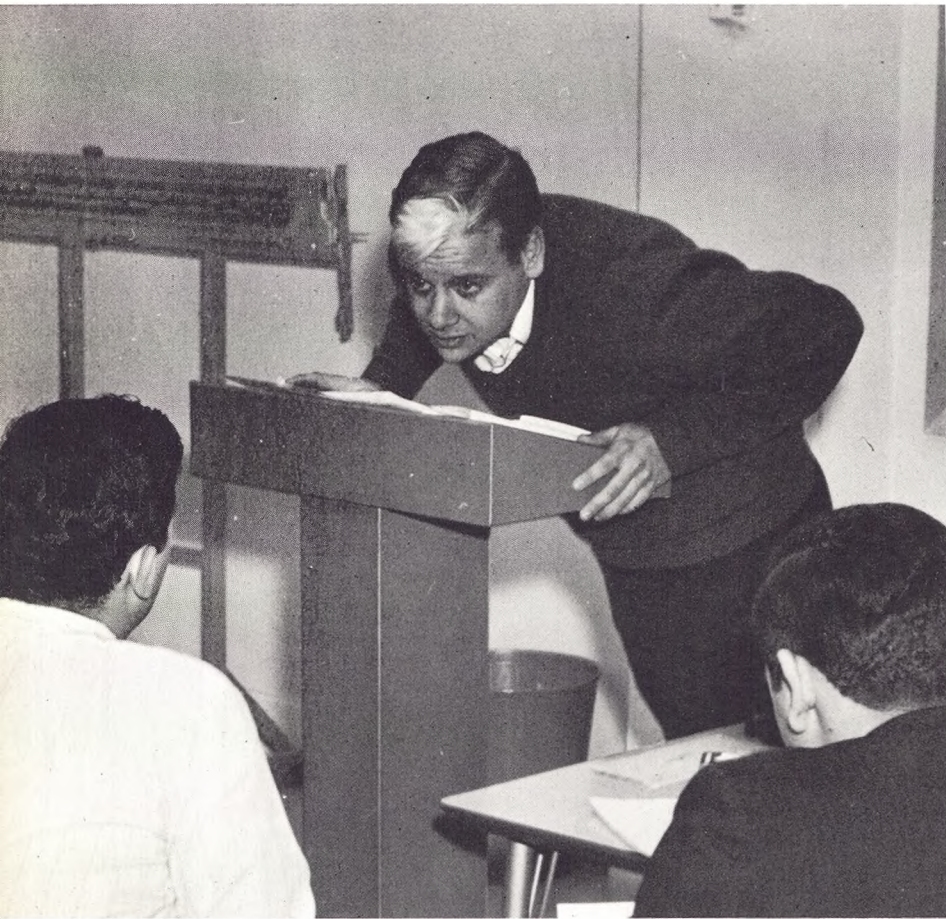


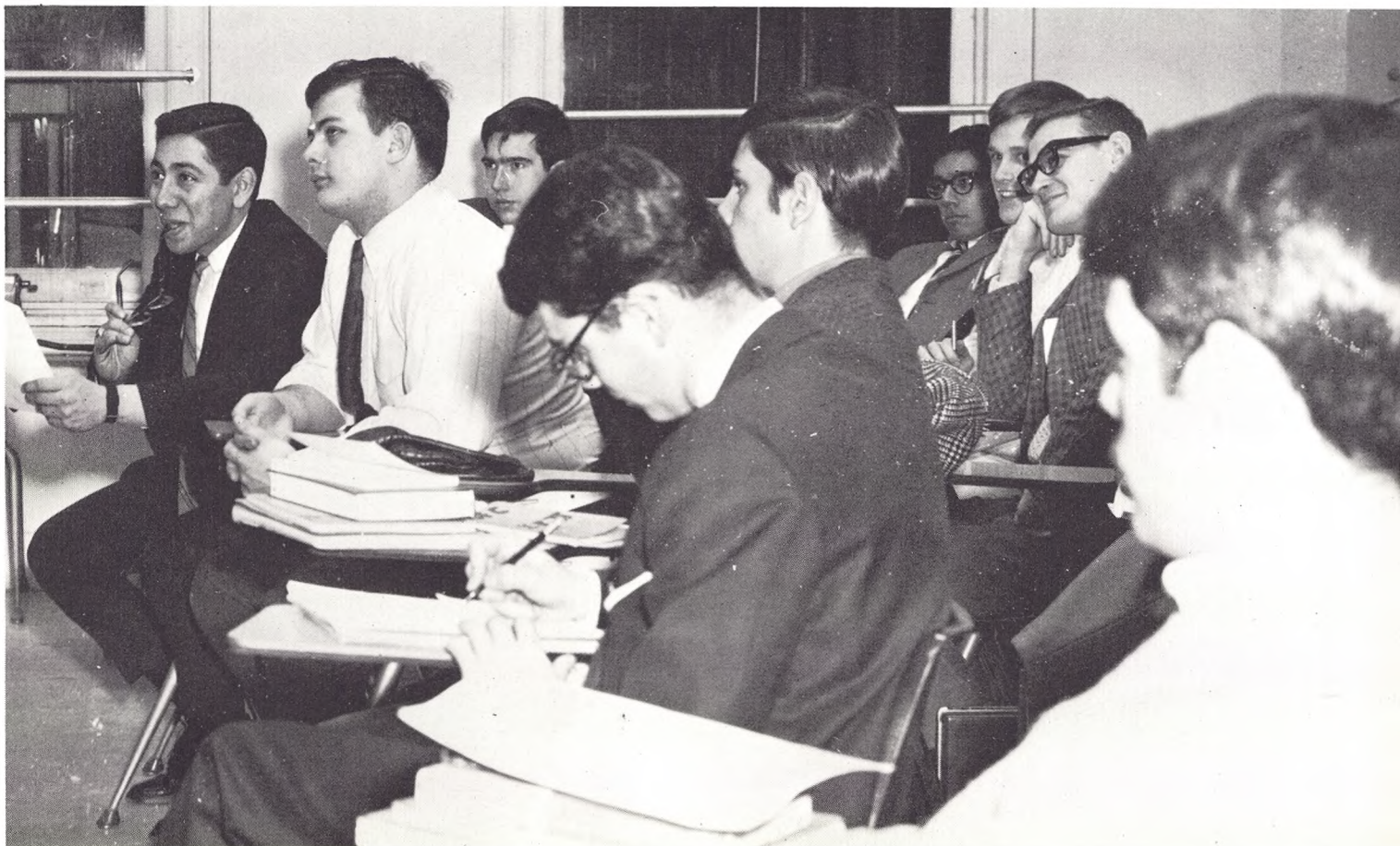
SAC it to me . . .



Don Hayward, S.A.C. President, gives a rep. the evil eye.

The Student Activities Council grew out of an awareness that the Student Council was becoming too big and unwieldy. For the last two years S.A.C. has been a council in its own right. Under its president, Donald Hayward, S.A.C. has organized the various activities of the College into an organized program. This has allowed students who are active in the College to more fully take advantage of all of its functions. Although independent bodies, S.A.C. and the Student Council have worked together to promote an atmosphere in which the student's needs can best be met.

With this spirit of mutual respect, these two bodies of student government have helped to show that the students at the College are willing and anxious to take part in the activities which it offers.



Judging by the facetious facial expressions Hayward must have made a funny.

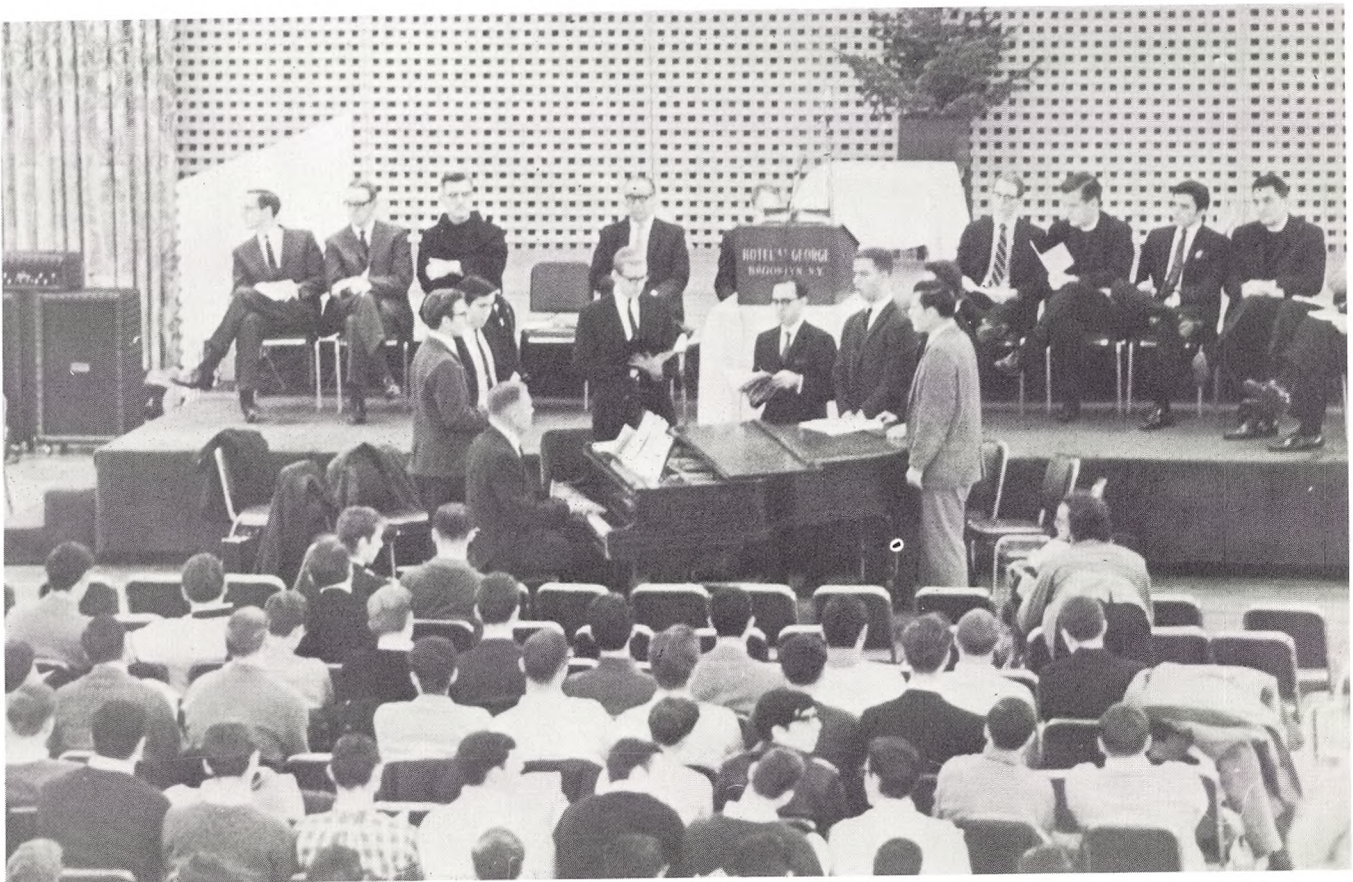
GLEE CLUB slowly fades

This was a challenging season for the St. Francis College Glee Club and its members. Unfortunately, due to the problems of construction, it was not possible to stage a joint concert this season, as we have done in the past. This was a great letdown to all the members who anxiously await this part of the year's activities. It is hoped that the program of joint concerts will be continued in our future seasons.

Under our new Director, Mr. George F. Seuffert, several new numbers were added to the repertoire, and presented to the students at the Christmas Assembly, as well as several other school functions.



Mr. George F. Seuffert
Director of the Glee Club



The Glee Club puts some soul into the Impossible Dream.