

# DEDICATION OF THE



## Doctor Clement Jedrzejewski LL.D., Ph.D.

*"The intent scholar, the wise adviser, the inspiring teacher . . ."*

"Today I feel good; tomorrow will be worse!" This philosophy of life has helped Doctor Clement Jedrzejewski enjoy the good in each day to the fullest because it is unexpected.

The students know this profound yet humble scholar simply as "Doctor Clement." And it is Doctor Clement who very simply inspires the students toward the completion of the final portion of the measure of the whole man. He has found the secret treasure; he is a whole man. He is the true idea of the Franciscan gentleman.

This Professor of Social Studies carries Franciscan ideals outside the college as he and some of his students work with the Downtown Area Renewal Effort, in his connection with other campuses in New York and in numerous educational circles.

Doctor Clement is not only a symbol of the whole man; he *is* the whole man! To this model for the students we humbly dedicate the 1960 *Franciscan*.



Gesturing in his inimitable manner, Doctor Clement stresses a vital point during his Anthropology class.



Doctor Clement enjoys a brief chat with a colleague and several of his sociology students.



# 1960 FRANCISCAN

## Professor Nicholas A. Fiorenza, M.A.

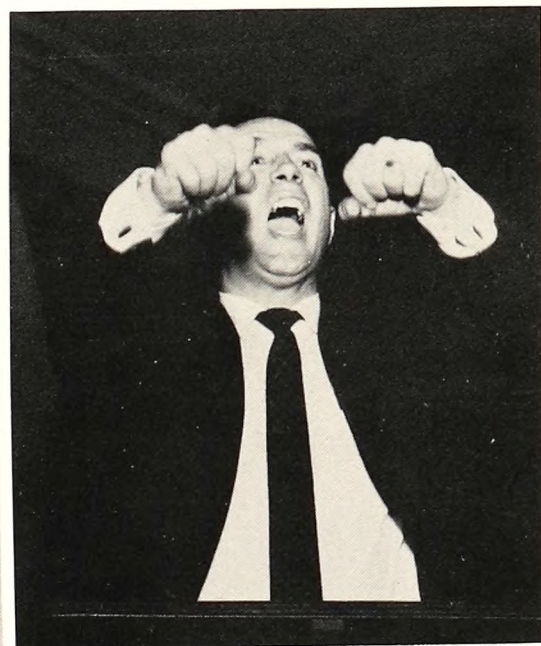
*"The dynamic teacher, the gifted artist, the respected activity moderator . . ."*

The man who is to be a whole man *must* develop himself culturally. No matter what climate of life he is in, winds from the other climates blow in and intermingle. In these phrases, we capture the aspect Professor Nicholas A. Fiorenza aims for in the completion of the student.

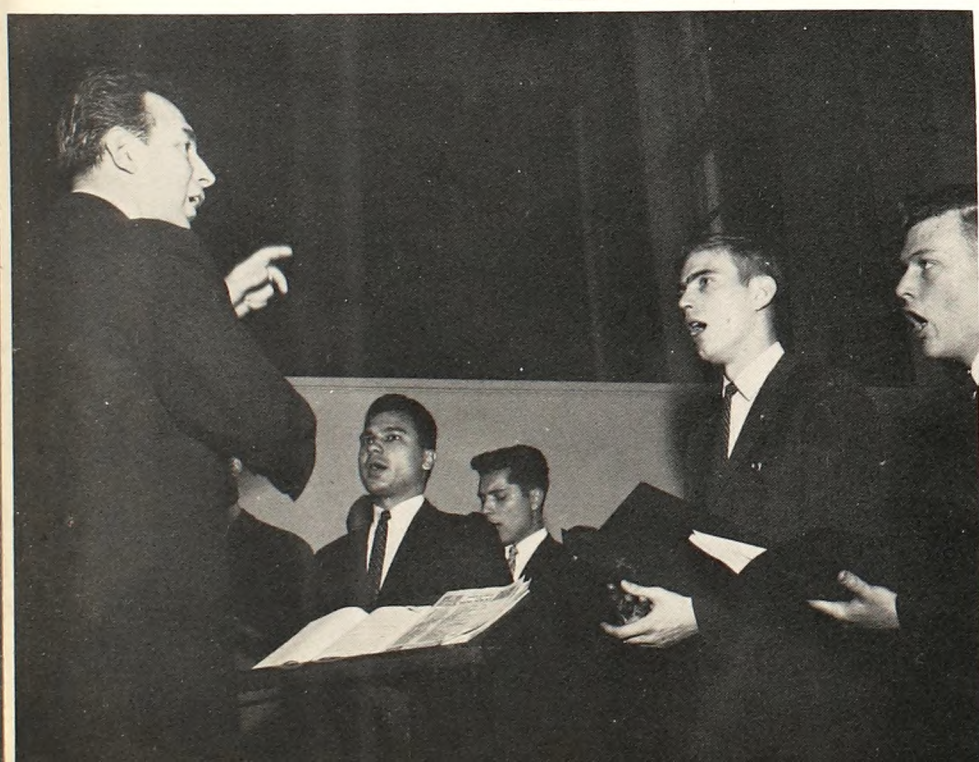
He is called "the student's teacher" in that he works with *the student* on the course material rather than just with the subject. The tools of Professor Fiorenza's contribution—experience, and more specifically the aesthetic experience.

In class and in his relationship to the student as teacher and friend, he stands out as instructor, adviser, companion and invaluable associate; for Professor Fiorenza is the faculty member who is closest in his relationships to the students.

To this truly many-faceted whole man, we dedicate the 1960 *Franciscan* in the spirit which he dedicates his life to the students of St. Francis College.



"Fortissimo," urges Professor Fiorenza.



Professor Fiorenza leads the Glee Club during the Christmas Assembly in a rendition of several Christmas Carols.