



reflection
of coordination
in . . .

FACULTY-
CURRICULUM-
GRADUATES

Incantation
Charles Sheeler
Courtesy of the Artist



BROTHER ANTHELM DROWNE, O.S.F.

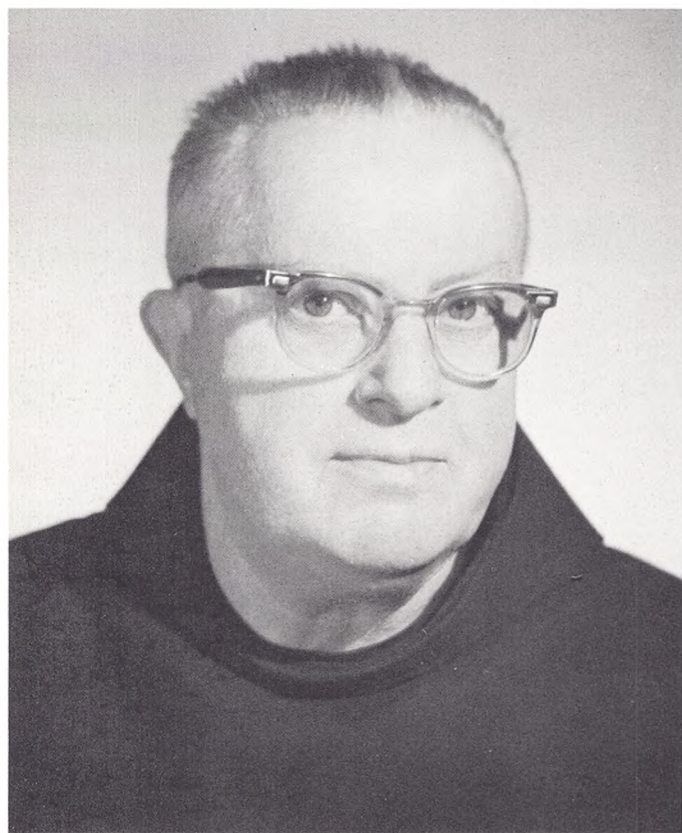
Librarian; B.A., St. Francis College; M.L.S., St. John's University.

The Library

Brother Anthelm's art of selectivity became a matter of choice rather than necessity this year. No longer hampered by limited shelf capacity, he and his staff were able to begin a gradual increase of the library to an expected 70,000 volumes from the present 35,000 volumes. The three-story building which opened in February includes a total of 300 seats in four main reading rooms. In addition, there is an audio room with eighteen tape recorders for language study and five phonographs with individual ear-phones for the collection of classical music. A special section houses the Brooklyn Historical Institute Collection with its growing Maritime Library.

Circulation headaches increased in proportion to the size of the library's enlarged operations. Consequently, library cards in the form of St. Francis College identification cards became necessary for the first time in the history of the College. A new staff member, Miss Rita Pascello, became circulation librarian.

Although all the equipment (including the brightly colored reading room furniture) and some of the procedures were new, some proven techniques were preserved. For instance, the task of reducing the vast collection of periodicals to microfilm was accelerated as an assurance that increased working space would continue to be used efficiently.



BROTHER DANIEL CONWAY, O.S.F.

Assistant Librarian



Miss Alice Riley

Assistant Librarian