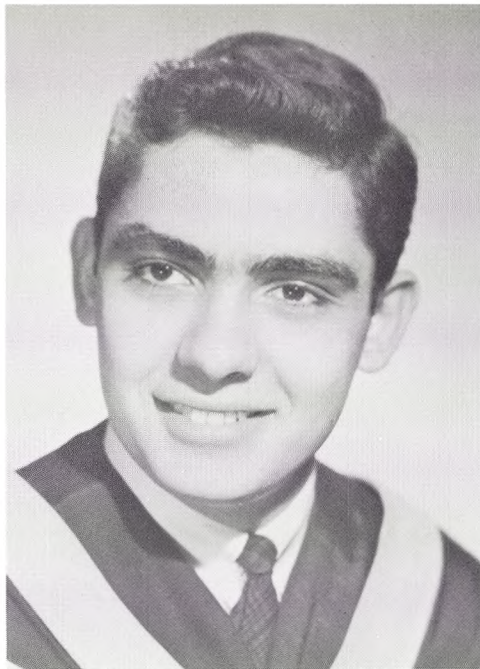


JOHN S. BUSH

B.S. Biology

St. Michael's Diocesan High School

Science Club 1, 2; Student Council 1; Intramurals 1, 2, 3, 4; Rifle Club 4; I.R.C. 1, 2, 3.



JOSEPH FRANK CARABETTA

B.S. Chemistry

St. Michael's Diocesan High School

Who's Who Among Students in American Universities and Colleges; Franciscan Spirit Award; Phi Rho Pi Fraternity 1, 2, 3 (Pledging Committee), 4 (Praetor); Student Council Representative 3, 4; Dean's List 1, 3; Chairman, Student Evaluations Committee 4; Chairman, Annual Red Cross Blood Drive 3; Chairman, Christmas Toy Drive 3; Co-Editor, *The Phoenix* 2, 3; Student Group Leader 3, 4; Captain, Student Loyalty Fund 1; Science Club 1, 2, 3, (Secretary) 4; Math Club 1; *Voice* 1, 3, 4.

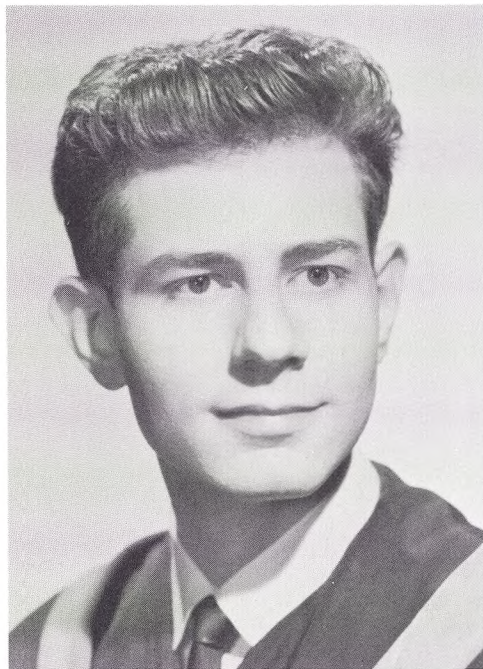


PETER PAUL CARFAGNO

B.S. Chemistry

Bishop Loughlin High School

Science Club 1, 2, 3, 4; Dean's List 3; Blood Drive Committee 4; Senior Prom Committee 4; Toy Drive Committee 3.



JOSEPH MAURICE CORTESE

B.S. Biology

St. Francis Preparatory

Science Club 1, 2, 3, 4.



**BROTHER MARCELLINO
DAVINO, O.S.F.**

B.S. Mathematics

John Adams High School

Dean's List 3; Math Club 1, 2, 3, 4.



FRANK PAUL DAMBECK

B.S. Mathematics

Bushwick High School

Glee Club 1, 2, 3, 4; Math Club 1, 2, 3, 4.

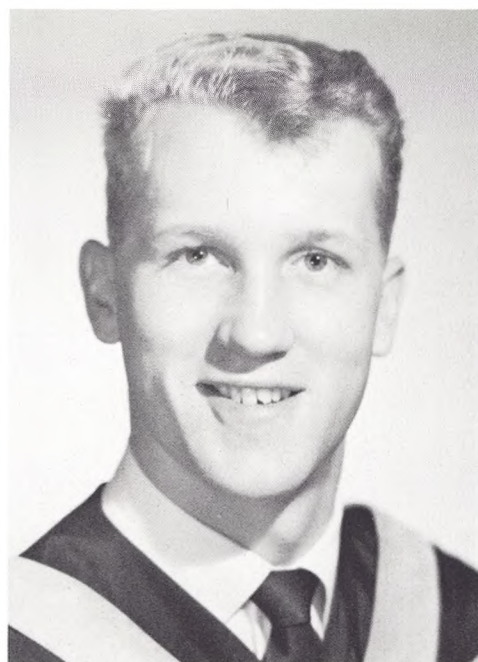


**VINCENT ANTHONY
DeCLEMENTI**

B.S. Mathematics

Richmond Hill High School

Freshman Class Vice President; Intramurals 1, 2; Student Council 3, 4; Math Club 3, 4; Science Club 1, 2.



EUGENE JAMES FELDHAUS

B.S. Mathematics

St. Francis Preparatory

Phi Rho Pi Fraternity 2, 3, 4; Water Polo Team 1, 2, 3; Math Club 1, 2, 3, 4; Science Club 1, 2; Intramurals 1, 2.

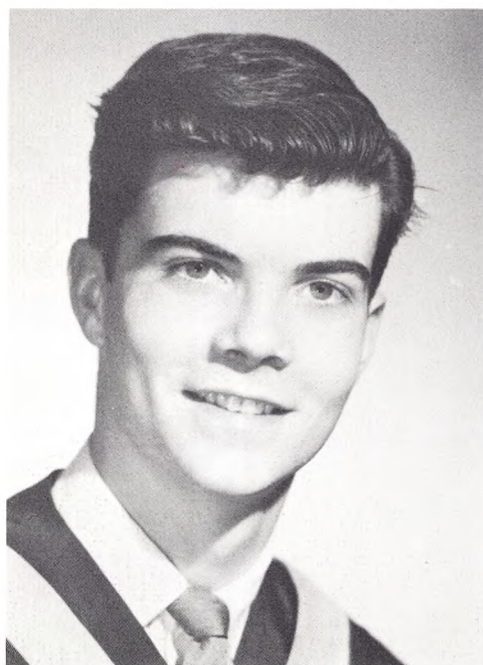


JOSEPH CHARLES DETTLING

B.S. Chemistry

Bishop Loughlin High School

Science Club 1, 2, 3, 4; Intramurals 1, 2; Senior Prom Committee; *Pheonix* 3, 4; Toy Drive Committee 3; Math Club 1.

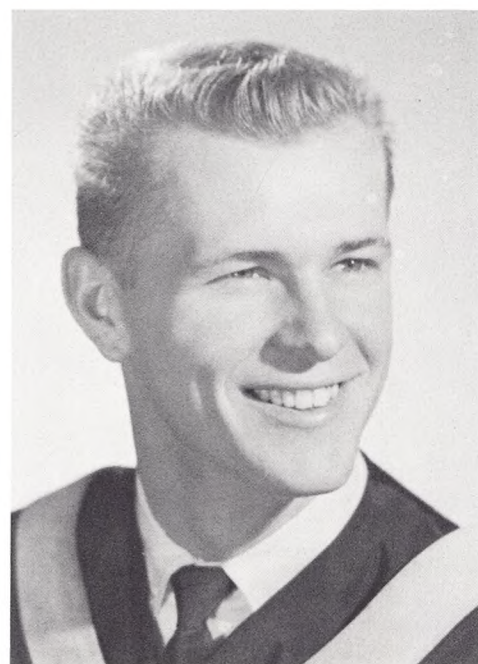


JOHN EDWARD FOSTER

B.S. Chemistry

St. Francis Preparatory

Dean's List 3; Science Club 1, 2, 3, 4; Weightlifting Club 1, 2; Math Club 1.

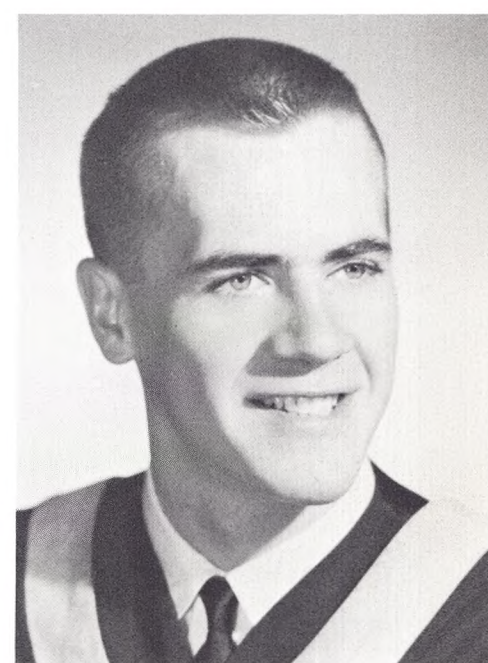


JOHN JEROME GRECSEK

B.S. Chemistry

St. Peter's High School

Who's Who Among Students in American Colleges and Universities; Varsity Water Polo Team 1, 2, 3; Glee Club 1, 2, 3, 4 (Vice President); Class Treasurer 4; Student Council Representative 2; Math Club 1, 2; Pi Alpha Fraternity 1, 2, 3, 4; Intramurals 1, 2; Seper Fi Club 1; Honorable Mention to All-Star Eastern Collegiate Water Polo Team 2.



CHARLES HOWELL HARRIS

B.S. Mathematics

St. Francis Preparatory

Who's Who Among Students in American Colleges and Universities; Franciscan Spirit Award; Class President 1, 2, 3, 4; Water Polo Team 2, 3, 4 (Co-Captain), All-Star 2, 3, 4; All American 3, 4; Pi Alpha 2, 3, 4; *Voice* 2, 3, 4 (Sports Editor); Intramurals 1, 2, 3, 4; Math Club 1, 2, 3, 4.