



UNDER GRANT from National Science Foundation, Harry Kranepool focuses on metabolism of the dino-flagellate.

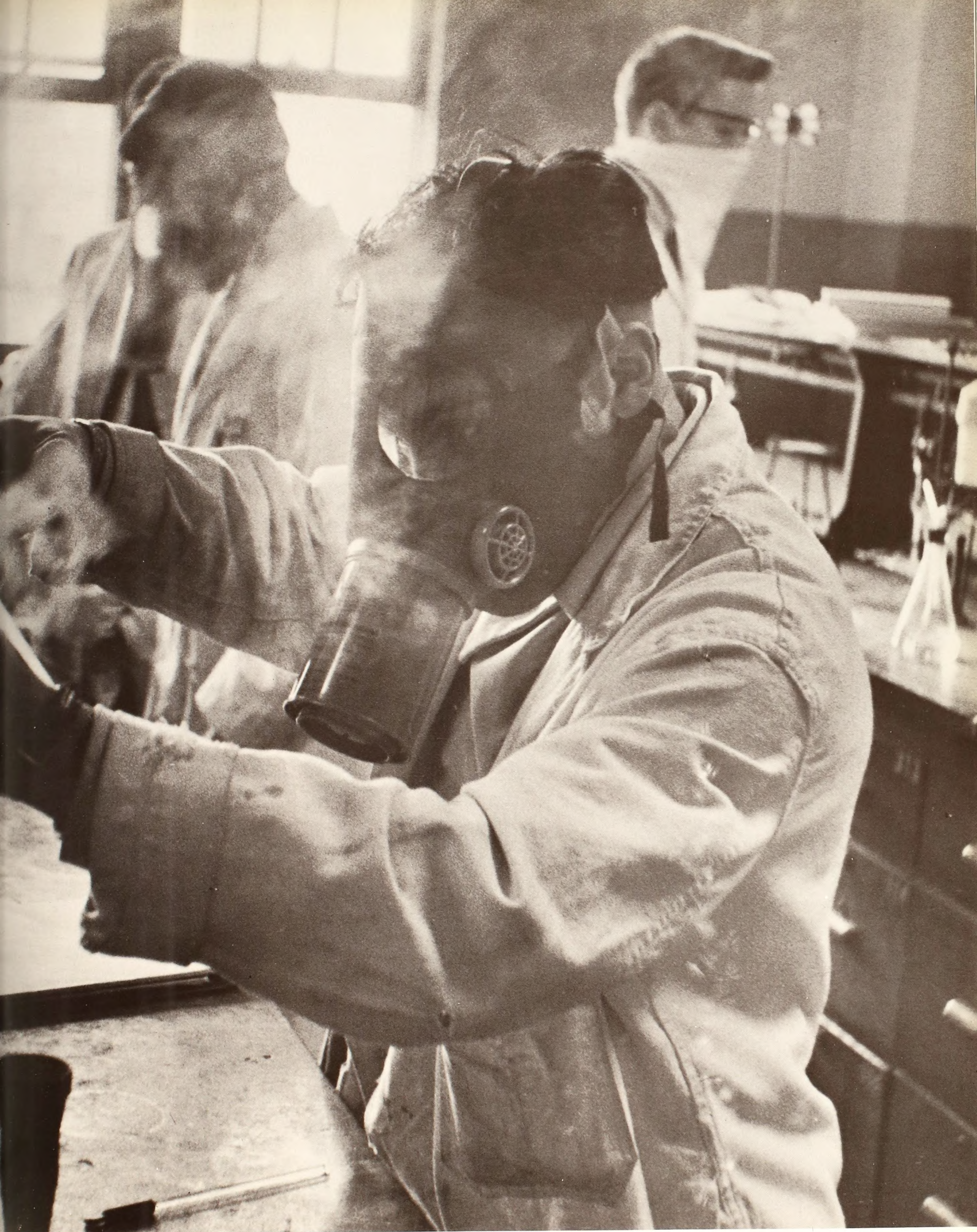
SCIENCE AND MATH CONCLUDED

Francis men rendered contributions to atomic research in the person of Dr. Donald Metz. Dr. Metz works at Brookhaven National Laboratories and has travelled extensively in Europe and South America under the aegis of the Atomic Energy Commission.

To prepare students for the kind of work now carried out by the faculty, the Division has constructed an effective scheme of science education. Simply stated, science students are expected to develop material presented in lectures into practically applicable methods in the lab. Degrees awarded in chemistry and biology work around this key principle.



FRANK RUSSO-ALESSI applies trig theory to surveying transit in determining elevation angle of College building.



FRANKENSTEIN SCENE in one of the labs finds St. Francis science majors working with NH_3OH in the nickel-determination test. Masks

are called for in closeup work for protection from the nitrogen dioxide fumes given off in the process.