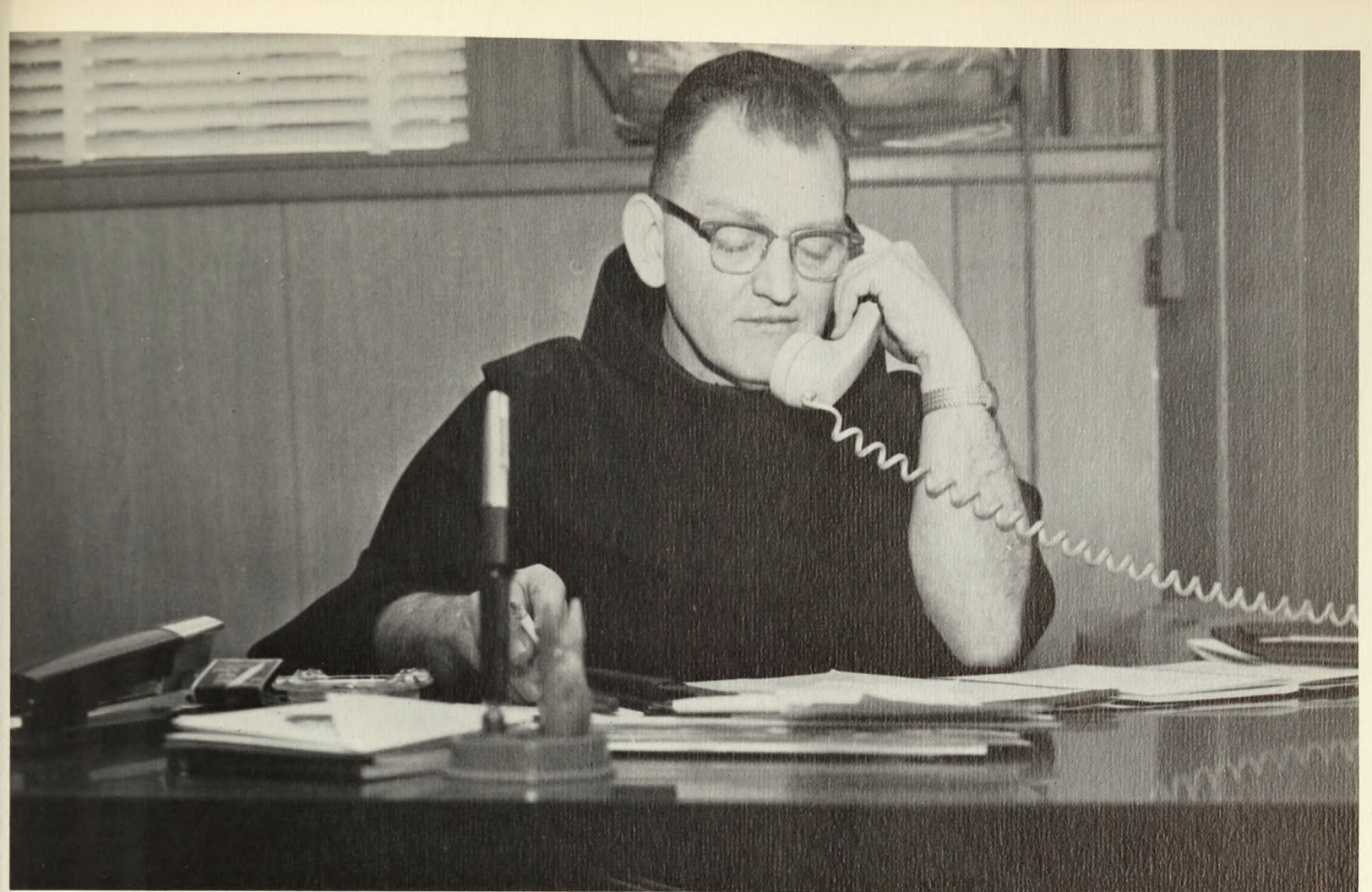


DEVELOPMENT

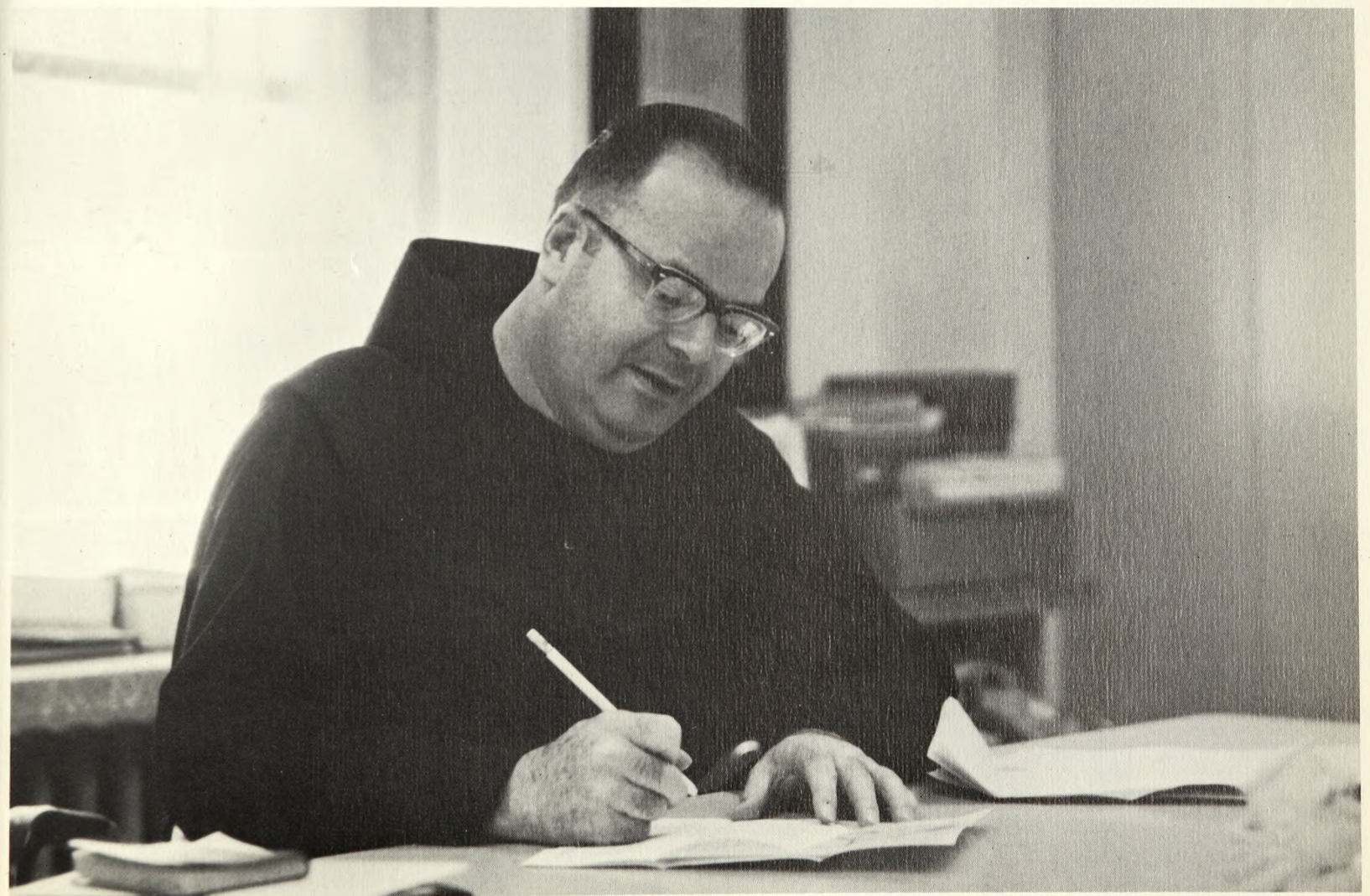
1968-69 saw the culmination of a man's dreams and the dreams of the Franciscan Community. For it was in this year that the new buildings, the Science Center and Faculty Residence, were brought to final perfection and completion. The Science Building is one of the finest undergraduate centers for the study of the physical and natural sciences in the east and is recognized as such by the members of the scientific community. Dr. Burke has finally seen his years of toil in inadequate facilities at Butler and Henry Streets change into the honor of administering the faculty and facilities of the new St. Francis College Science Center. The Science Center has facilities and individual labs for such varied courses as Experimental Psychology, Physiology, Electronics, Mechanics, Physical Chemistry, Biochemistry, Plant Physiology, Genetics and various other courses.

The Faculty Residence is unequal in its facilities and living quarters for the Franciscan Brothers on the faculty, staff and members of the administration of St. Francis College.

Truly 1968-69 was the culmination of the dreams of Bro. Jarlath Murphy, the man who unselfishly gave of his time and zeal to conduct the financial campaign for the new buildings and who was the main stalwart in times of disappointment and depression throughout the trials and tribulations of both the fund-raising and construction. It is with great pride that the Franciscan honors this truly unselfish and dedicated man.



BROTHER JARLATH MURPHY, O.S.F.



BROTHER PLACID COTTER, O.S.F.