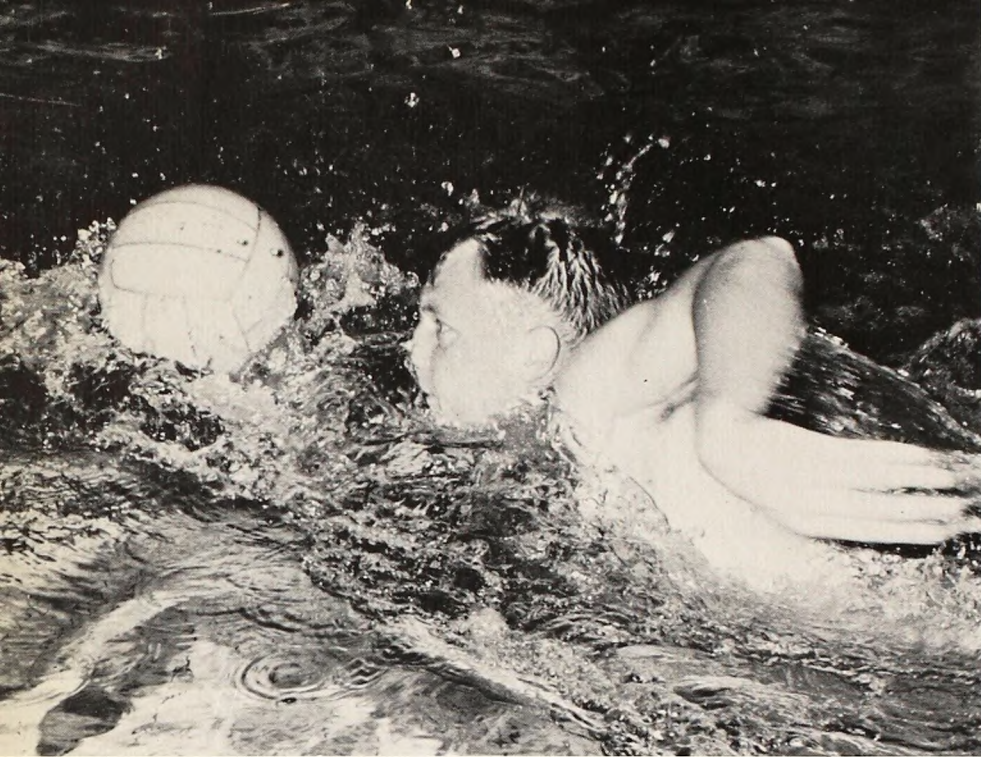


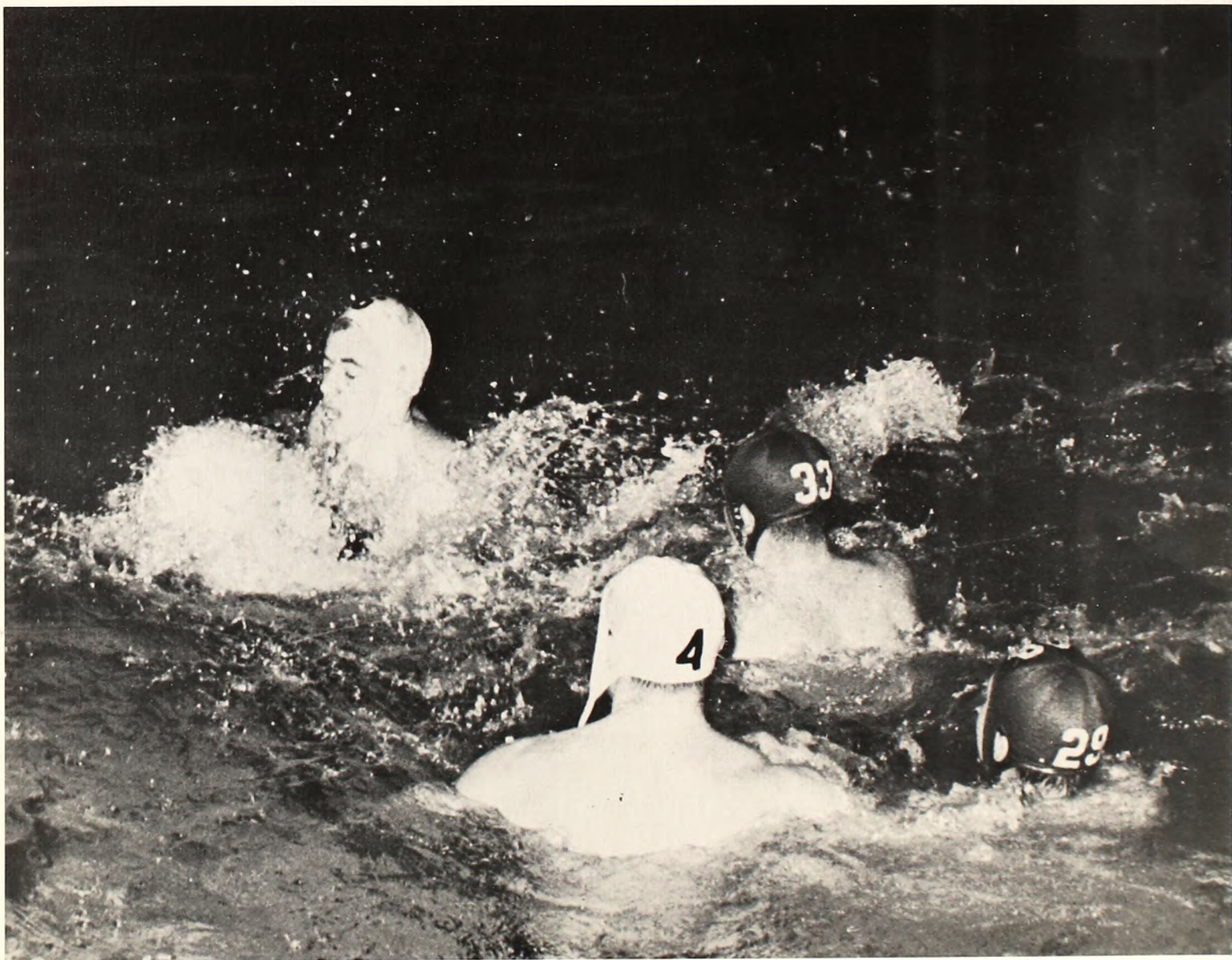
WATER POLO, *Continued*



SENIOR BILL ANDERSEN dribbles the ball out from his defensive position. A three year veteran of aquatic antics, Willy had timely advice for all of the nine rookies who joined the squad this year.



"THIS WILL MAKE FIVE," Don McQuade appears to be indicating to Frank Loughlin, as he prepares for a shot. High scoring Don had a field day against Community College as he chalked up eleven goals.

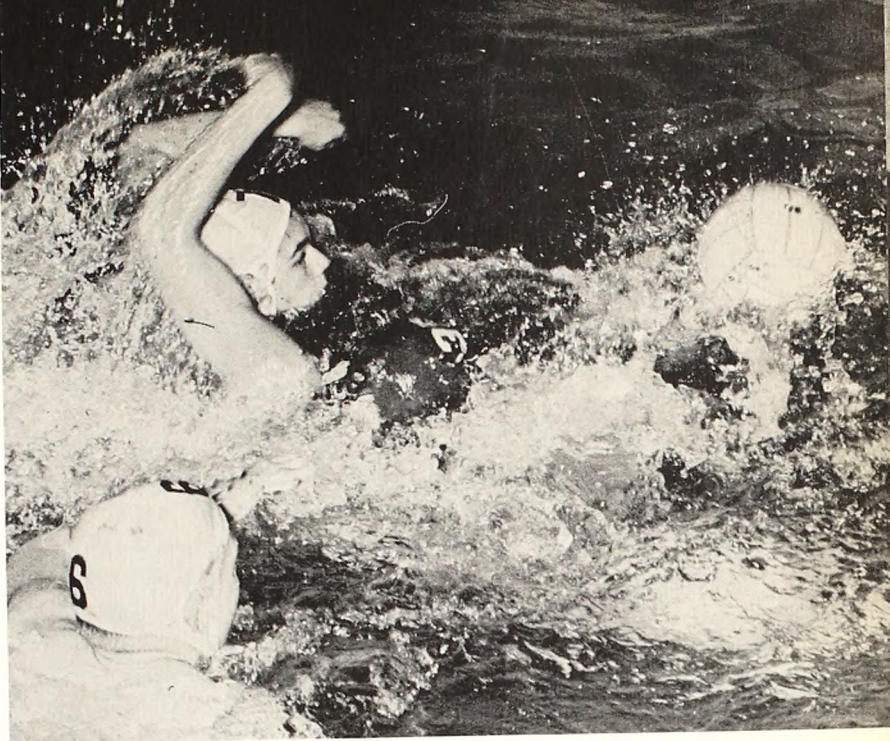


ONE OF OUR WATERCRAFT IS MISSING. All that it takes is a hand on the ball and consequences like this follow. Harris

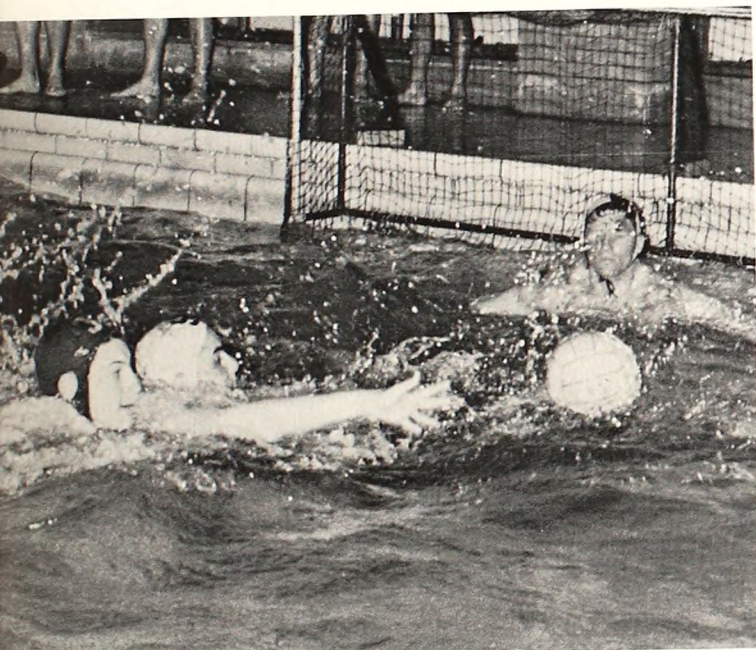
was off in a flash with the loose ball and on his way to another goal.



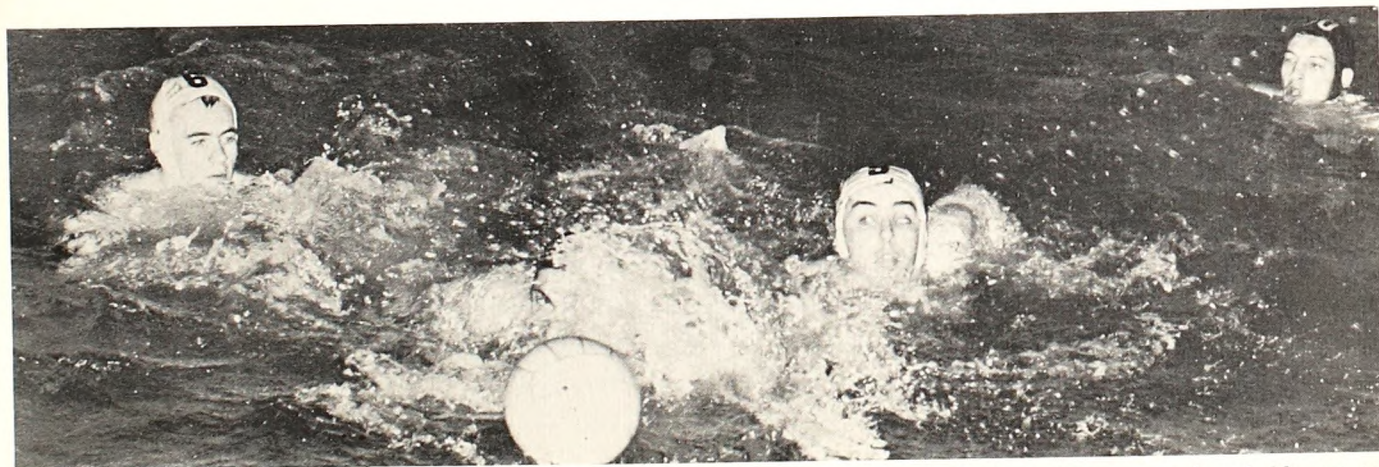
IN A PRACTICE SESSION, Frank Loughlin rears back to pass. Frank, one of six sophomores on the fledgling squad, joined with Don McQuade at the forward positions and provided much of the scoring power.



ARMED FOR FLIGHT a Queens player launches an attack toward the Terrier goal. Ed Peters (top) and Ray Bishop, both Terrier Freshmen, have other ideas.



SO NEAR looms an opposing goal. Defenseman Larry Lynch and rookie goalie Roger Pullis team to keep the Queens game shutout a reality.



"SOMEONE IS COMING BETWEEN US," and it's a partially hidden player from M.L.T., Charlie Harris (left) and Larry

Lynch move toward the loose ball . . . and probably not in vain as the final score proved: Terriers 24, Engineers 9.