



Maria Tilesio
B.S. Management



MaryJo Tozzi
B.S. English



Carol Veneroni
B.S. Health Care
Management



Deberor Williams
B.S. Aviation Business
Studies

Alma Mater

*Alma Mater, hail to thee!
Loyal Friends salute thee!
Mem'ries of thy name recall,
Deep affection for thee.*

*Thy ideals shall ever be
Inspiration constantly,
Binding us together,
Binding us to thee!—*

*Hail St. Francis, we thine own,
Loyal to thee ever!
Sing the praises of thy name,
With accord together!*

*This the pledge we give anew,
Loyal to the Red and Blue
Alma Mater to thee!*

Carlos Armaro

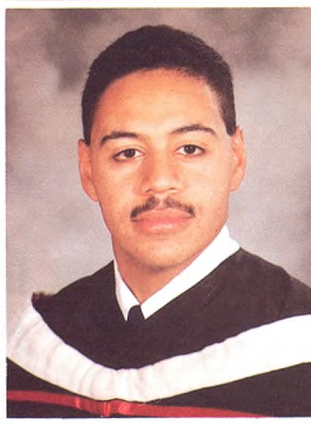
BS Phys. Ed/Teacher Training

Nadejda Amirov

BS Management/Business
Administration

Golan Jamil

BS Management



Christopher Lane

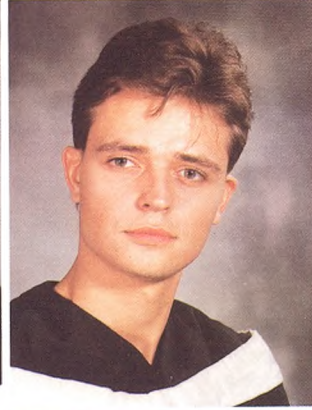
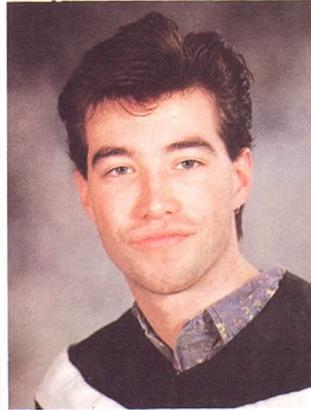
BA Communication Arts

Victor Mogielnicki

BA Communication Arts

Yolanda Orquera

BA English



Taufiqur Rahman

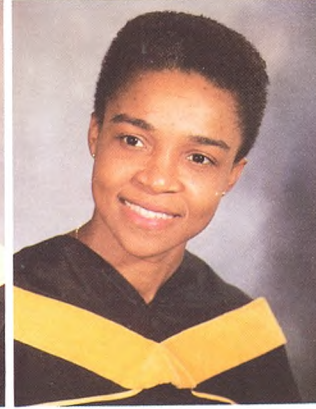
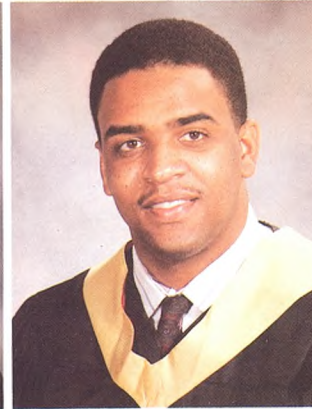
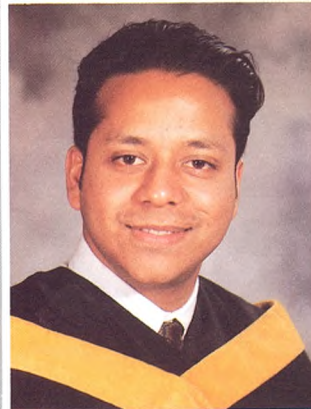
BS Management/Business
Administration

Marc Ross

BS Management

Valerie Worrell

BS Management



our belated picture-takers

Life is a long journey that we all must take. Along the way we approach many setbacks and overcome many obstacles.

Along the way we learn from mistakes and teach from experience.

Entering Saint Francis College is just one of the many stops, we as Franciscans, make along the way, and here our minds are broadened with knowledge, our expectations are expanded, and our dreams and goals are becoming clearer and closer to our grasp.

Nevertheless, during our stop at Saint Francis College, we have all met some of our closest and dearest friends who will be forever, and it is this fact that helps us remember: **"how far we travel in life matters far less than those we meet along the way."**

— Theresa Firpo —
Editor