

DIVISION OF AND



JOHN M. BURKE

Professor of Chemistry

B.S., St. Francis College; M.S., New York University; Ph.D., St. John's University.



JOSEPH J. MARTORANO

Associate Professor of Biology,
Director of Research

B.A., Brooklyn College; M.S., New York University; Ph.D., George Washington University.

JOSEPH LAZZARA

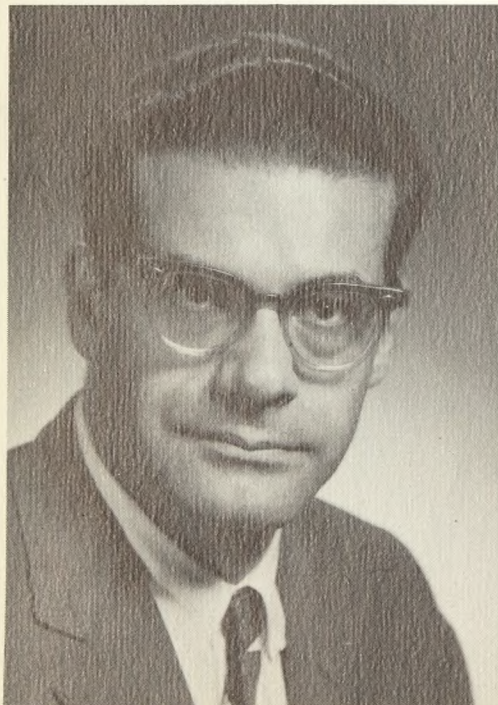
Assistant Professor of Mathematics

B.S., St. Francis College; M.S., St. John's University.

JORGES ANDRES

Associate Professor of Mathematics

B.S., Vibora Senior High School; B.Ed., Normal School for Teachers of Havana; Ph.D., University of Havana.



The Division of Natural Sciences and Mathematics offers four fields of concentration. These are Biology, Chemistry, Mathematics, and Physics. The major aim of the division is to instruct the student in the nature of the integrated physical phenomena of both the microcosmos and the cosmos at large. The division further endeavors to develop in the student an aura of appreciation of both the orderliness of nature and of the constantly expanding interrelationship between the various branches of Science.

The Division by the very nature of its material prepares the student for

NATURAL SCIENCES

MATHEMATICS

graduate or professional school. Those who enter the various select vocational fields upon graduation encounter little difficulty in achieving success due mainly to the quality of scientific education which they have received.

The Division moved into its new building in September 1968. The new science building is considered to be one of the finest undergraduate centers in the East. These new facilities will provide even greater initiative for the faculty to continue to promulgate an excellent scientific education for the student of St. Francis.

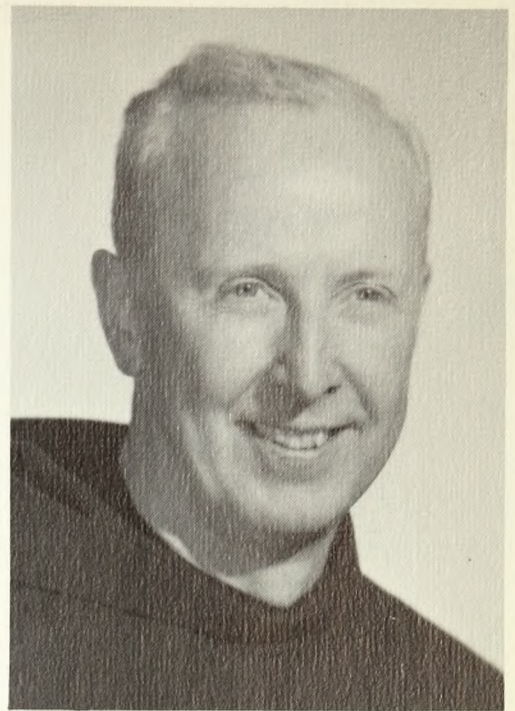
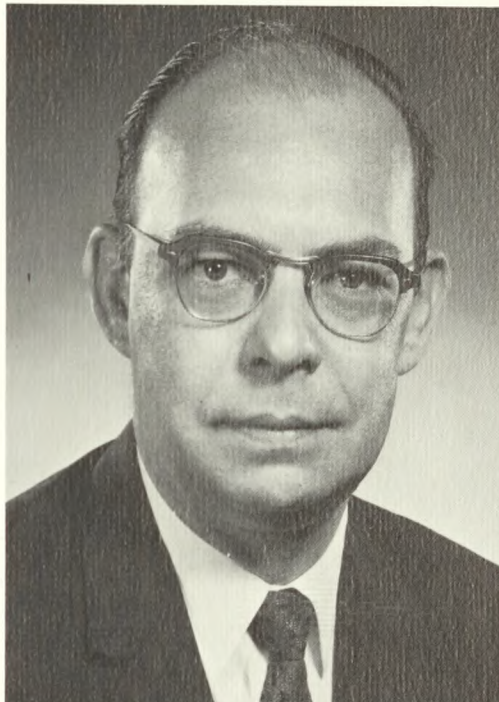
THOMAS J. QUIGLEY

Assistant Professor of Chemistry
B.S., St. Francis College; M.A., Brooklyn College; Ph.D., Rutgers State University.



DONALD METZ

Professor of Chemistry
B.S., St. Francis College; M.S., Ph.D., Polytechnic Institute of Brooklyn.



BROTHER LEO QUINN, O.S.F.

Professor of Mathematics
B.A., St. Francis College; M.A., St. John's University.

BROTHER SIMEON RYAN O.S.F.

Associate Professor of Biology
B.S., St. Francis College; M.S., Ph.D., St. Louis University.

