

**EDWARD J. QUIGLEY, M.S.**  
Director of Publicity



A FINAL CHECK is necessary before Ed Quigley and Jim O'Connor, President of the Press Club, can send this copy to the metropolitan newspapers. This year, Mr. Quigley published the alumni newspaper, the *Terrier*, regularly and kept former students informed of their Alma Mater's strides in education.



**BROTHER ANGELO, O.S.F., B.A.**  
Executive Secretary of Alumni

"GENTLY, FRIEND, GENTLY . . ." Not above physical labor, Brother Angelo, with the aid of an unseen worker, sets up the Loyalty Fund payment booth in the Lounge. Two sheets of plywood, some two-by-fours, nails, brown stain and a little patience made a very practical booth ready for students' use by mid-October.



# Personnel



**NATHANIEL J. PALLONE, M.A.**  
Educational Consultation Center



MR. GEORGE LOUGHRAN, left, confers with Brother Philip concerning the developmental reading program for freshmen. The Guidance Center provides assistance to students who wish to improve their reading ability through developmental classes.



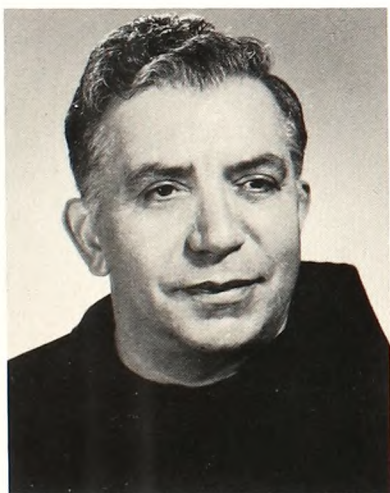
**GEORGE LOUGHRAN, M.S.**  
Guidance Counselor



**JOSEPH VALENTINO, B.S.**  
Director of Placement



**PATRICK TUFANO, M.S.S.**  
Psychiatric Social Worker



**REV. EDWARD SALERNO, O.F.M.**  
Chaplain



MISS ELIZABETH HALLOWELL, Psychometrist and vital member of the Personnel staff, administers and deciphers the testing program.