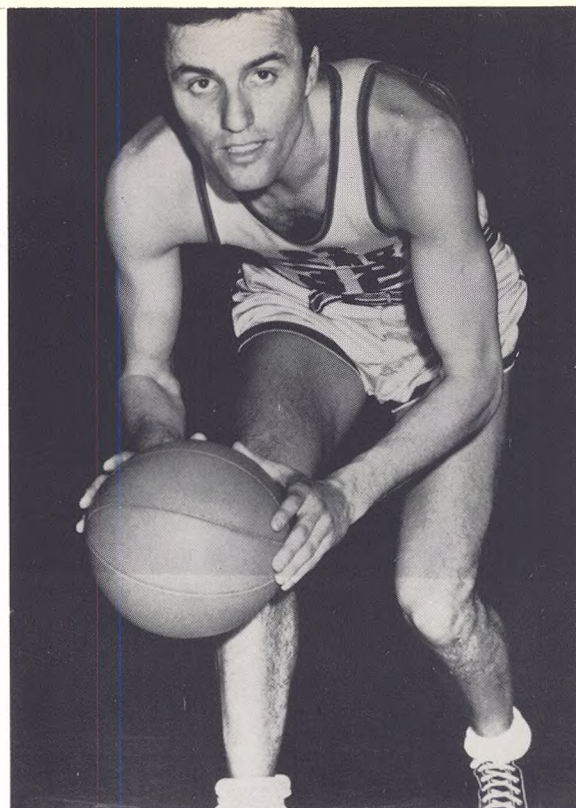






Bill Paterno



Jim Luisi, high scorer.

24 and Jim 17. Jack Nalty and George Stein both got 14 for the Broncos.

#### **San Francisco 73—St. Francis 42**

This was another rout right from the outset and the Terriers could not get started. The Dons looked much better than they did earlier in the Garden. They started off quickly and built a 35-14 lead at intermission. The Terriers scored more often in the second half but not nearly enough to make it close. Jim Luisi threw in 17 tallies and Don Lofrgan led the Frisco offensive with 12 followed by Rene Herrerias' 10 points.

#### **St. Francis 76—Hawaii 54**

Returning to the Armory after their miserable Western trip, the Terriers took it out on the Hawaii Rainbows. They led from the beginning and had hardly any difficulty as the game progressed. They were hitting on a fine percentage of their shots as they shook Marty Conway and Jim Luisi loose many times under the basket for easy lay-ups. Conway got 19 and Luisi 15 for the Lynchmen and Ed Loui hit 26 for the visitors.

#### **Iona 74—St. Francis 55**

The Terriers took off for White Plains and except for the first 15 minutes were never in the contest with the Gaels. Roy Reardon really opened up and dropped in his first 5 shots but the other Terriers could not hit consistently enough to pull it out. The Gaels led by 12 at intermission and increased it to win going away. Reardon garnered 19 while Joe DiStanislao and Frank O'Shea were both good for 17 points for Iona.

#### **Toledo 85—St. Francis 73**

Closing out the worst season in their history, the Terriers played well against the Toledo Rockets but did not have quite enough rebound strength to top the highly regarded visitors. Toledo had several local boys on their squad and they all played a prominent role in the Rocket victory. Bob McDonald from Jamaica had 21 points and Bill Walker from St. Albans had 15. Ray Rudzinski played his best game of the season and threw in 25 tallies for the Lynchmen.

Tom Quinn hits against Mexico.

