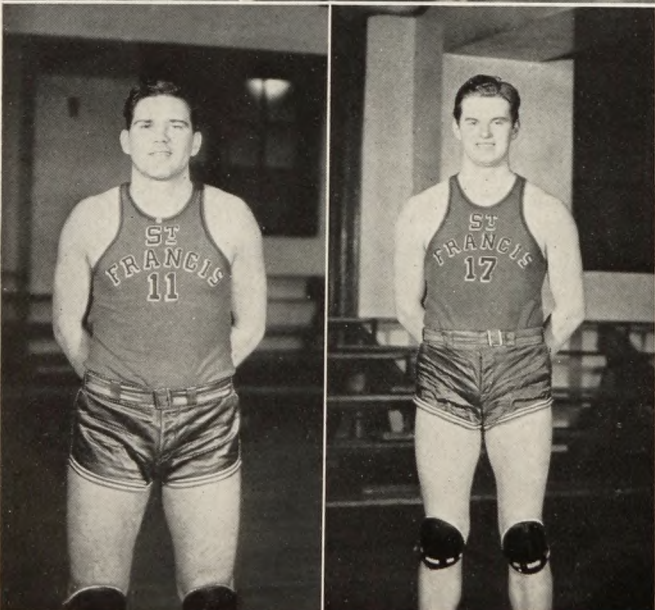
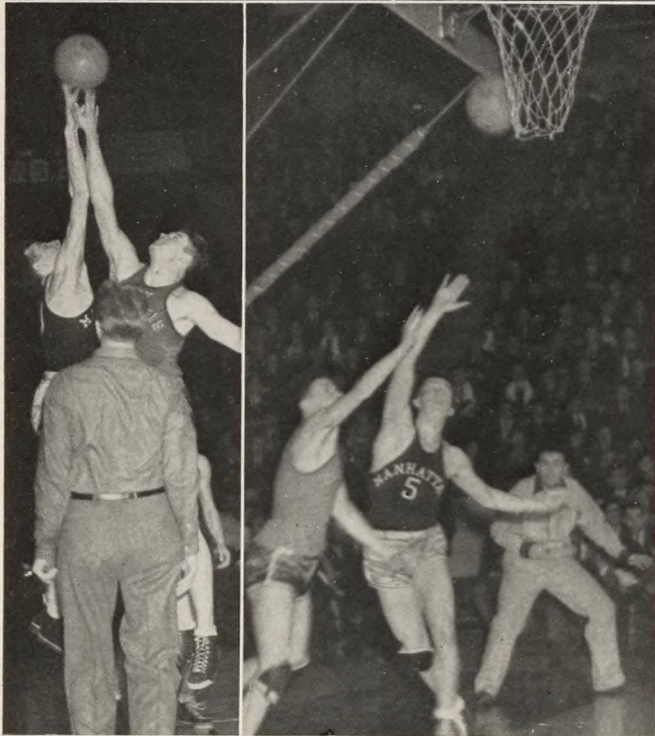
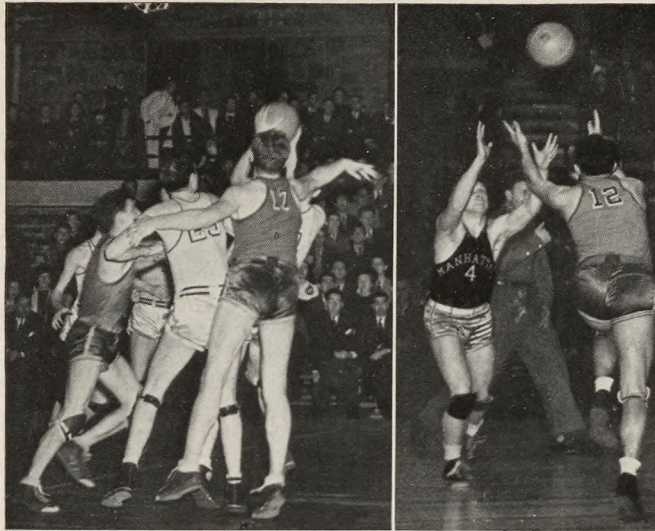


## Basketball

IN the curtain raiser an extremely overconfident Terrier quintet was rudely awakened by a 36-33 set-back when they invaded Jersey City to meet St. Peter's College. After building up a 24-10 half-time lead over the underrated Peacocks, the Terriers became careless and blew what should have been an easy victory. . . . The fact that they missed twelve fouls played no small part in the initial defeat of the Red and Blue. . . . By netting ten points Capt. Al Lenowicz jumped away to an early lead in the Metropolitan scoring race—a lead which he steadily built up until he was declared ineligible in mid-season. . . .

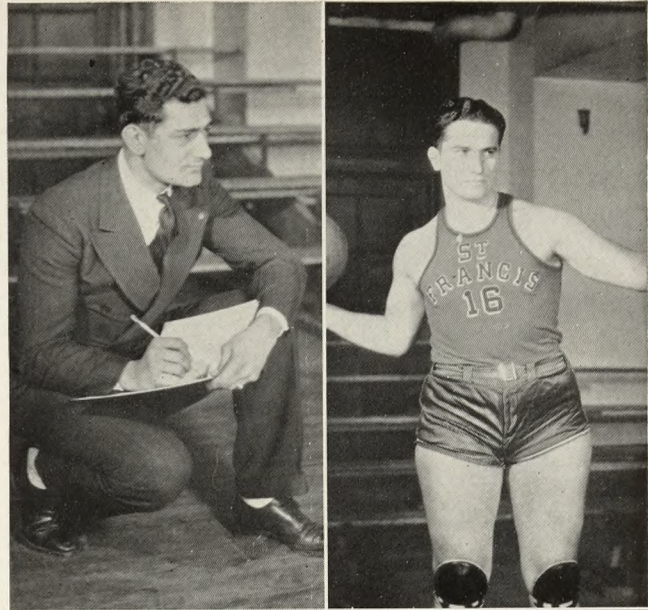
Reassured by an easy victory over Cathedral College, the Terriers travelled to City College grimly determined to upset the dope and finally break into the win column after seventeen straight defeats at the hands of the Beavers. . . . The Terriers had a great deal of difficulty in finding themselves as revealed by the fact that they did not net a field goal in the first thirteen minutes. . . . It was only by virtue of a spirited rally in the final ten minutes of the tussle that brought them from the short end of 20-13 tally to a 26-24 victory. . . . Capt. Al again showed the way as he caged twelve points and played a great floor game. . . . This pleasant victory called for a celebration which was adequately taken care of at Phi Rho's frat house. . . . Fresh from easy victories over Brooklyn Pharmacy, Newark University, and Rider, the Terriers met a strong Marshall College quintet from West Virginia. The Franciscans proved themselves a definite threat in the race for Metropolitan basketball supremacy by setting back the boys from the "hills," 45-33. . . . "Gabby" Naughton proved that the Virginians were really his cousins as he led the



PLAYERS, Left: Al Lenowicz, Captain Fall Term. The spearhead of a ten game winning streak as he spurted to the position of high scorer of Metropolitan Area. Right: Jim Naughton, Captain Spring Term. Took up the slack when Lenowicz ended his collegiate athletic career. ACTIONS: The alert photogs catch the highlights of the games with Manhattan and Fordham.



Left: Tom Randazzo, Senior Manager, Spirit, Press Agent, Publicity Manager, Dietician, Monitor, Guide and Understanding Father of the Team. Right: Ernie Vohs, Graduate ball player, member of the Varsity Team for 3 years, and Sports Editor of the 1939 Franciscan. ACTIONS: Camera snaps fury of the St. John's clash as Terriers bow; however, O'Neill has edge on Lloyd in Walkathon.



scorers against them for the second year in a row. . . .

After a pleasant warm-up tussle with the Alumni, the Terriers had to overcome a halftime deficit to score its eighth straight victory by defeating an efficient Davis-Elkins quintet 41-35. . . . Jerry O'Neill entered the game as a substitute and took high-scoring honors with fourteen points. Thereafter, Coach Cooney found his competitive spirit indispensable. . . .

Riding the crest of a wave, the Terriers snapped Fordham's streak at five with a triumph by 38-27. . . . It was the second victory over the Rams in an eight game series. . . . The outstanding feature was Jerry O'Neill's holding the high-scoring Hassmiller to two field goals. . . . Naughton and Hrbek showed the way in scoring, as Lenowicz steadied the attack. . . .

Over-confidence almost upset the Terriers as they nosed out a stalwart Upsala College quintet, 44-37. . . . Unknowingly, Al Lenowicz ended his collegiate career in this game as he led the attack with twelve points—raising his total to 123 points and establishing himself as the leading Metropolitan scorer. His nearest rival had not yet broken 100. . . .

As the Terriers gaily pullmanned to Philly to extend their ten game winning streak at the expense of LaSalle, they found an unexpected obstacle in their path when LaSalle considered Al Lenowicz ineligible and refused to play with him in the lineup. As this occurred just before the teams took the floor, the Terriers had little time to revamp their attack which had always centered about Captain Al. . . . This unexpected loss of their captain so disrupted the team-play that despite the gallant play of the squad, it was all to no avail as LaSalle romped off with victory. Score 36-26.

Determined to avenge an early season

