



**PATRICK HEAVERS**

B.A., Philosophy

St. Ann's Academy

Anthonian Club 1, 2, 3, 4; Gaelic Society 2, 3, 4; St. Bonaventure Philosophical Society 1, 2, 3, 4.



**JOHN PETER HAMILTON**

B.S., Chemistry

Power Memorial High School

Science Club 1, 2, 3, 4; Troupers 2, 3, 4; Student Group Leader 4; Intramurals 1, 2, 3, 4.

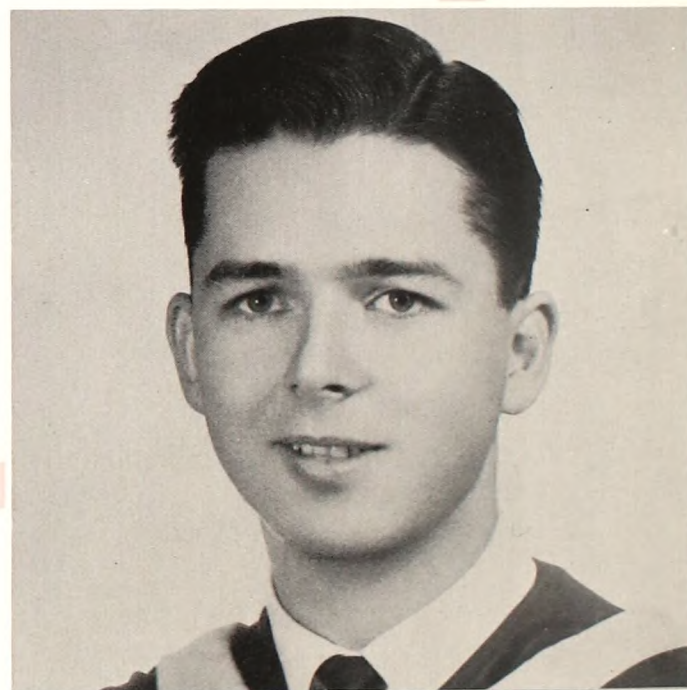


**MARTIN WESTLYE HELGESEN**

B.S., Mathematics

Malverne High School

Science Club 1, 2; Math Club 1, 2, 3, 4; Rifle Club 1, 2; Intramurals 3; Senior Week Committee 4.



**THOMAS JAMES HASSETT**

B.A., Economics

Bishop Loughlin Memorial High School

International Relations Club 1, 2, 3, 4; National Federation of Catholic College Student Alternate Delegate 2; Business Club 2, 3, Secretary 4; Pi Alpha 2, 3, 4; Student Group Leader 4; Sociology Club 3, 4; Loyalty Fund Steward 3; Intramurals 1, 2, 3, 4.

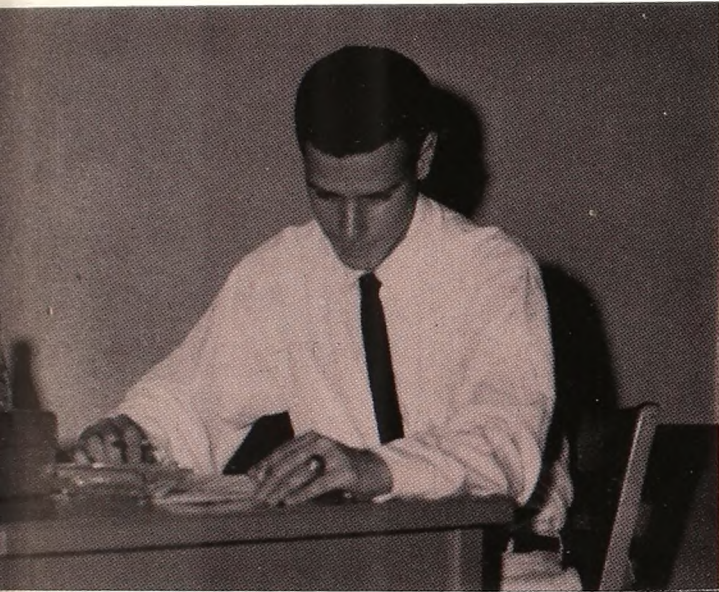


## RICHARD CHARLES HENNESSY

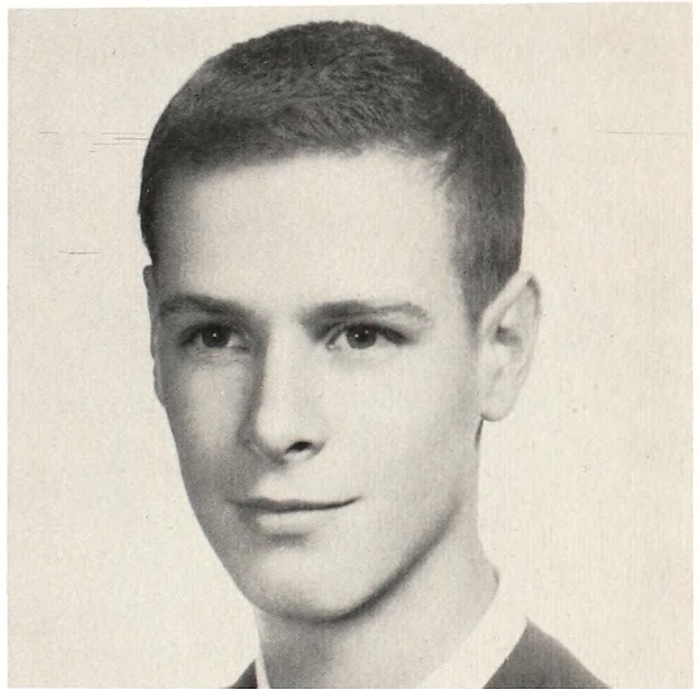
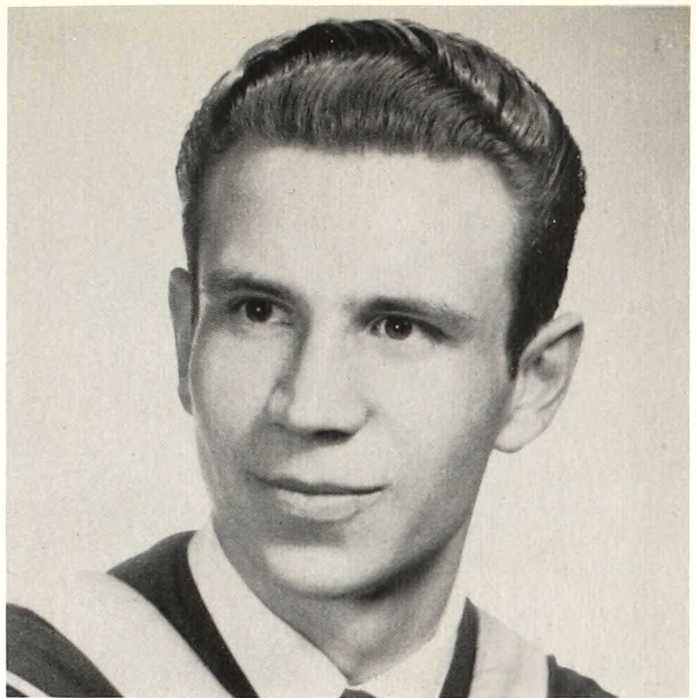
B.A., Sociology

St. Francis Preparatory

*Who's Who Among Students in American Colleges and Universities; Franciscan Spirit Award; Pi Alpha 2, 3, Master of Ceremonies 4; Sociology Club Vice President 3, President 4; Dean's List 3; Student Group Leader 4; Voice 4; Franciscan 4; Intramurals 1, 2, 3, 4; Weightlifting Club 3, 4; National Federation of Catholic College Students Sociological Commission Chairman 4.*



**THE DEADLINE DRAWS NEAR** for the VOICE to go to press and Sports Editor Mike Henning gives the copy a final proofreading before sending his page to the printer.

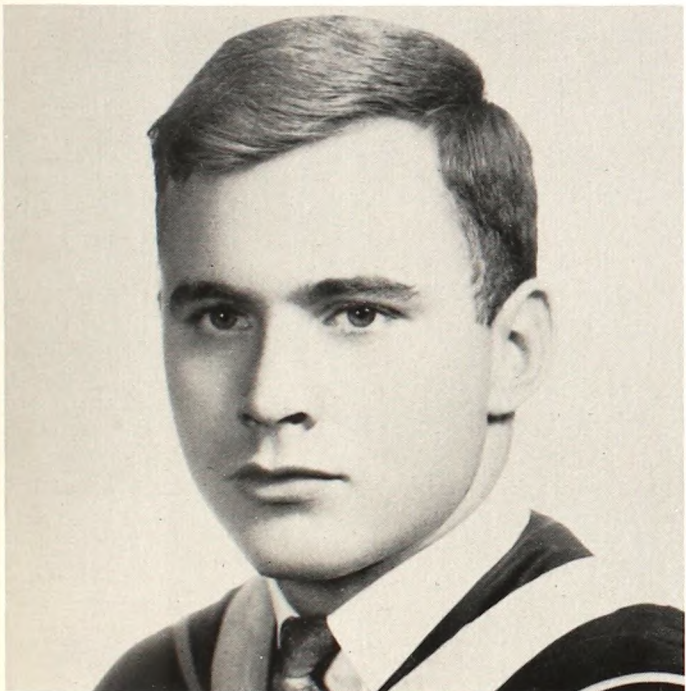


## MICHAEL ANTHONY HENNING

B.B.A., Accounting

St. Francis Preparatory

*Who's Who Among Students in American Colleges and Universities; Dean's List 1, 2, 3, 4; Voice 1, 2, Sports Editor 3, 4; Pi Alpha 2, 3, 4; Business Club 1, 3, Historian 4; Varsity Basketball Manager 1, 2, 3, 4; Franciscan 3, Sports Editor 4; Intramurals 1, 2, 3; Franciscan Spirit Award; Campus Day Committee 3; Rally Committee 3; Student Group Leader 3, 4.*



## MICHAEL KEVIN JEWELL

B.A., History

St. Francis Preparatory

*International Relations Club 2, 3, 4; Pi Alpha 2, 3, Social Chairman 4; Intramurals 2, 3, 4; Loyalty Fund Steward 3; Student Group Leader 4; Voice 3; Franciscan 4.*