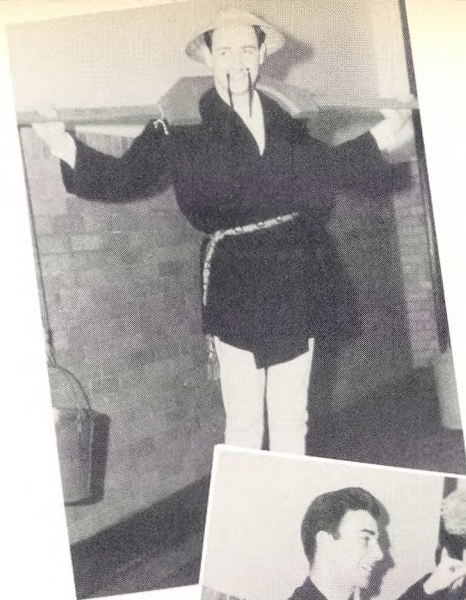


Unity in Christ, in support of St. Francis, and in aid to one another, this is the threefold pledge of the brothers of Phi Rho Pi Fraternity, Beta Chapter. In a year marked with much uncertainty, the bonds of fellowship existing under this pledge have been made even stronger.

Spiritual unity was displayed in corporate Communion and corporate prayers. A Summer boatripe, frequent parties, and the annual Winter Dance highlighted the social calendar. Brothers of Phi Rho Pi were outstanding leaders in such College activities as the Student Council, The Voice, The Franciscan, the track team, the Third Order and others. Of those who hold the highest student honor which St. Francis awards, membership in the Duns Scotus Honor Society, more than half are brothers of Phi Rho Pi. Seven of the twelve St. Francis men selected for inclusion in this year's edition of Who's Who Among Students in American Colleges and Universities are members of the fraternity.

At present there are fifty active members of Phi Rho Pi here at St. Francis. The fraternity originated with the Alpha Chapter at Manhattan College and the Beta Chapter was founded here in 1923. With many brothers entering the armed forces, a central mailing address has been set up so that the spirit of fraternity may not be lost.







# The Troupers

## *Dear Ruth*

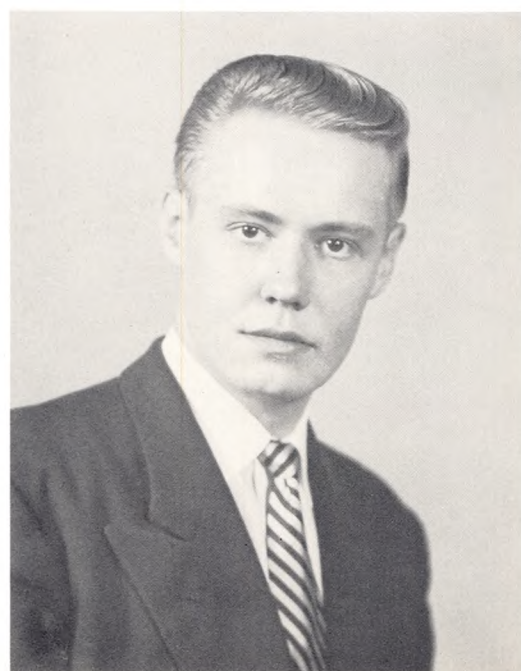
A Comedy in Two Acts by Norman Krasna

Directed by ARTHUR HANSON

### CAST

(in order of appearance)

Dora . . . . .	Josephine Carillo
Mrs. Edith Wilkins . . . . .	Rose Lopapa
Miriam Wilkins . . . . .	Bernadette Foley
Judge Harry Wilkins . . . . .	Harold Sheehan '52
Ruth Wilkins . . . . .	Barbara French
Lt. William Seawright . . . . .	Edward Butler '52
Albert Kummer . . . . .	William O'Berg '53
Martha Seawright . . . . .	Rosary Maglioto
Sgt. Chuck Vincent . . . . .	John Bals '55
Harold Klobbermeyer . . . . .	Stephen Zerucha '52



HAROLD R. SHEEHAN  
President