



SPORTING TIES AND BEANIES, four Freshmen take a breather from the rigors of Orientation week to talk over their plans for the four-year cycle they are beginning. The ties and beanies are traditional uniform for Orientation.

A WEARY WALKER regulates the discussion at a knockdown, drag-out Council meeting. Spirited debates sometimes stretched the running time of the bi-weekly meetings far into the night, and at this point Joe could use a cup of coffee. Sophomore Class President Jerry Egan looks tired too.



A PENSIVE GROUP listens to the words of Roy Cohn at an I.R.C.-sponsored appearance in the Monsignor Kelly Lounge. Once the site of the old gymnasium, the Lounge was the center of political and social cycles this year.



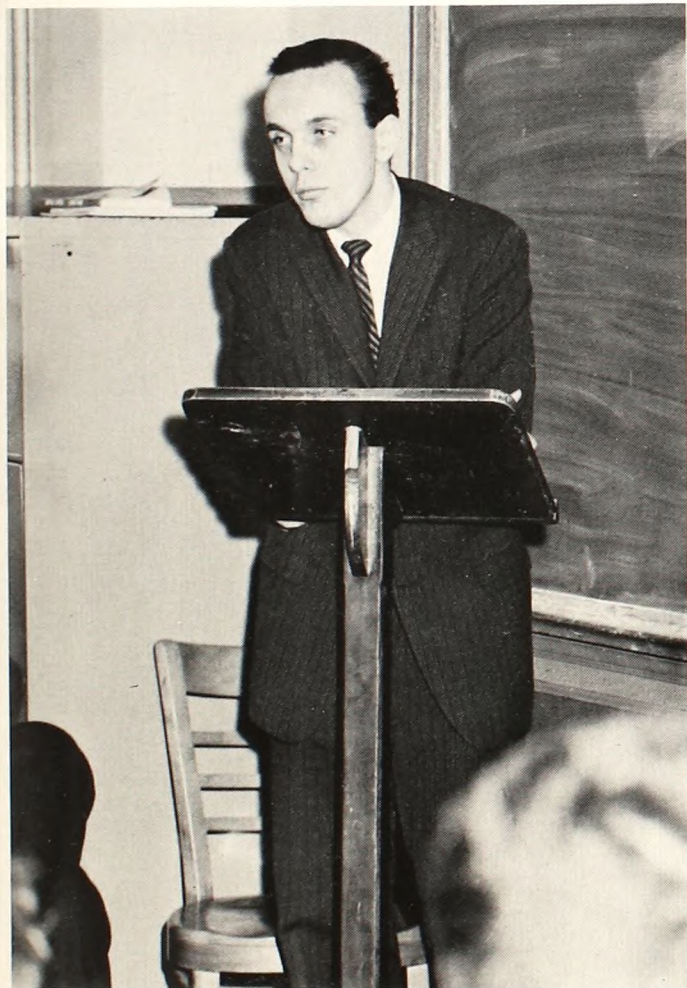
DIGGING FOR DATA, *Franciscan* Editor Bill Walsh and Senior Editor John Ward take down names and positions for a class picture. Accuracy was a must for the yearbook staff in its annual production cycle.



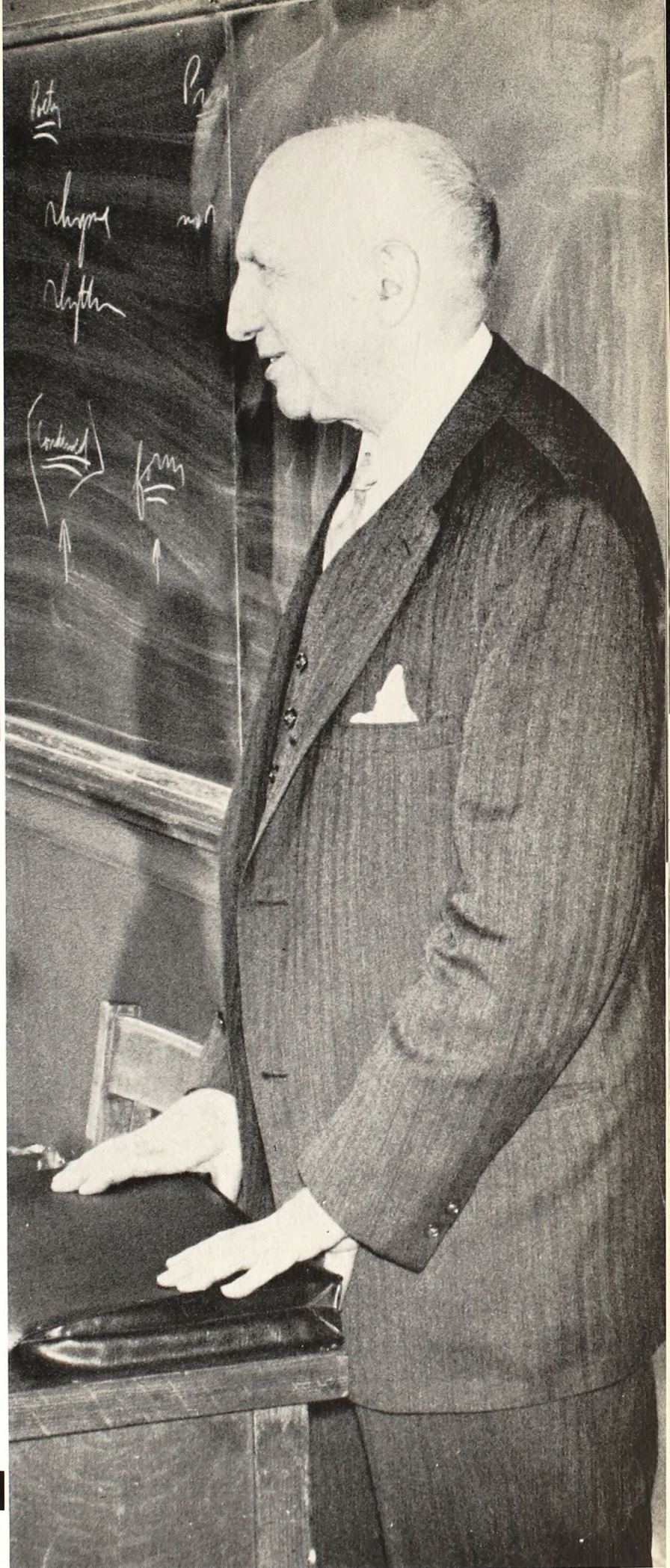
DAIS DWELLERS at the Annual Alumni Dinner included prominent figures in the Church, education and politics. Seen applauding a speaker are Very Rev. Brother Bertrand, Superior General of the Franciscan Brothers, Very Rev. Brother Urban, President of St. Francis College, and His Excellency Bryan J. McEntegart, Bishop of Brooklyn.



PLANNING FOR THE FUTURE, Senior Bob Capano discusses his career plans with Miss Marian Murray from A&S Department Store at the Annual Placement Conference. The Student Personnel Service offers Seniors moving on to greater cycles many opportunities to meet and speak with possible future employers.



NEXT YEAR'S SENIOR LEADER Jerry Egan takes the podium at a Junior Class meeting. Jerry was chosen Senior Class President for the 1961-62 St. Francis cycle by the unanimous acclamation of his classmates.



"THAT IS VERY NICE WRONG ANSWER." Dr. Clement Jedrzejewski, the learned and beloved Chairman of the Sociology Department, delivers a good-natured reprimand in his own inimitable lighthearted manner. Dr. Clement's presence and influence made possible a close liaison between St. Francis Sociology students and the important social agencies in the metropolitan area.