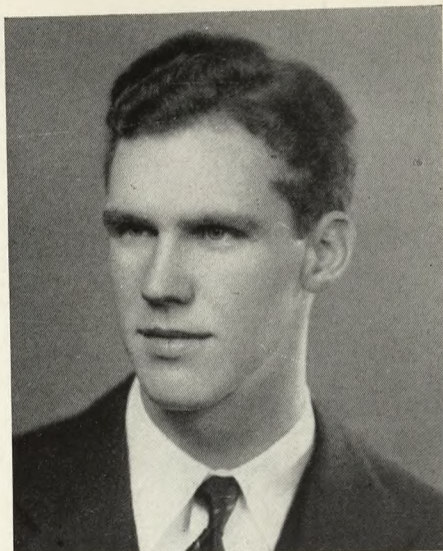


J. VINCENT GALLAGHER, B.A.

Bishop Loughlin Memorial

Duns Scotus, Pres.; Dean's List; Student Council 3, Sec. 4, Chairman Entertainment Comm.; Arts Club 3, Sec.-Treas. 4; Glee Club 2, 4; History Club 4; Freshman Basketball; Varsity 2, 3; Junior Prom.; Chairman Senior Week; Troupers 1, 2, 3, 4; Oratorical Contest 2, 3, 4; *Voice* 3, 4; *Franciscan*, Business Mgr.



FRANK W. GWIAZDA, B.S.

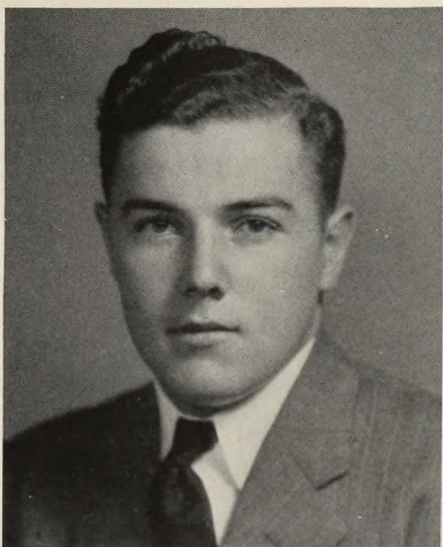
Eastern District High School

Class Vice Pres. 4; Mendel Club 3, 4; Indicator Club 3, 4; German Club 1, 2; Glee Club 4; Freshman Basketball; Varsity 2, 3, 4; Intramural Com.; Junior Prom; Chairman Senior Ball; Senior Ring Committee; Troupers 1, 3; Phi Rho Pi; *Voice* 4; *Franciscan*.



Left: *Now Ladies, I may be assuming too much, but . . .* Right: *Alma Mater . . . How are you?*

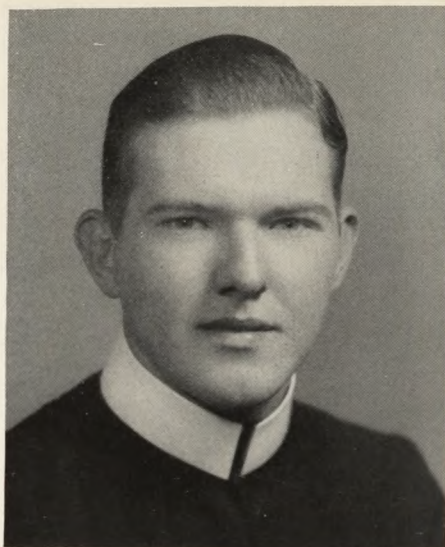




JAMES F. X. KELLY, B.A.

St. Francis Preparatory

Religion Club; History Club 3, 4;
French Club 4; Pi Alpha.



BROTHER KENNETH, O.S.F., B.S.

St. Anthony's Juniorate

Duns Scotus; Dean's List; Religion Club; Indicator Club 4; Math Club 3; Class Basketball 1, 2, 3, 4.

Left: *Go get your own ads.* Right:
Beef-stew à la Kenny.

