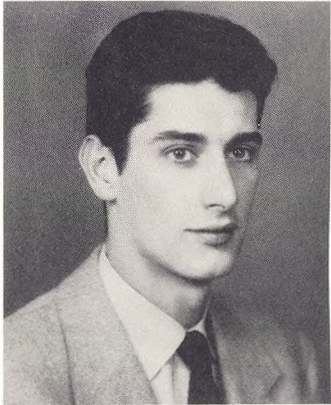
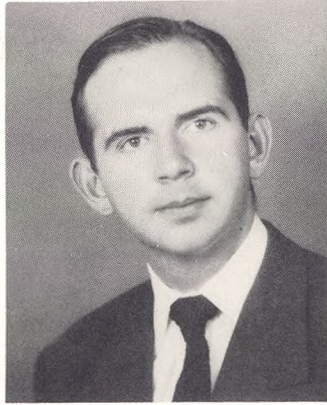


Who's Who

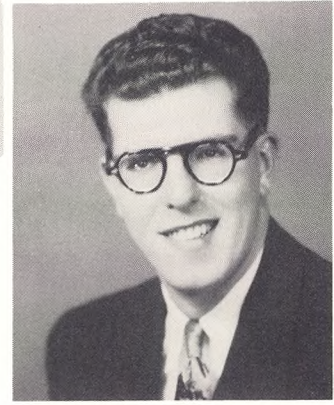
AMONG STUDENTS IN AMERICAN UNIVERSITIES AND COLLEGES



ROBERT T. BELDEN



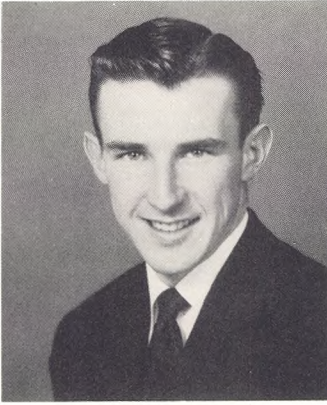
WILLIAM J. BROOKS



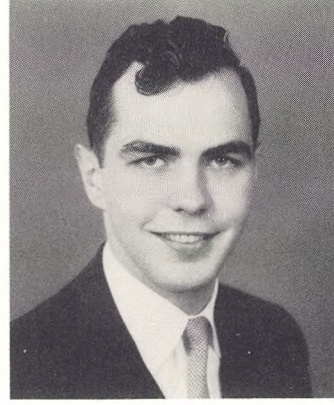
STANLEY F. FISCHER



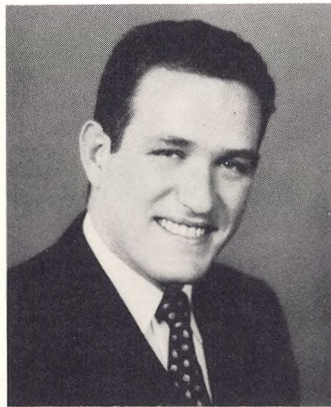
JOSEPH P. FREY



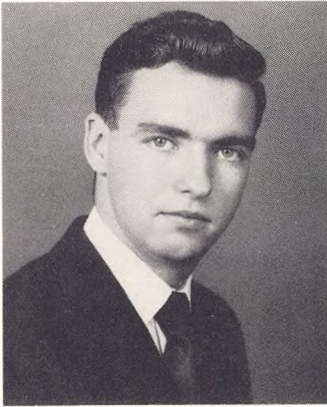
MATTHEW R. LALLY



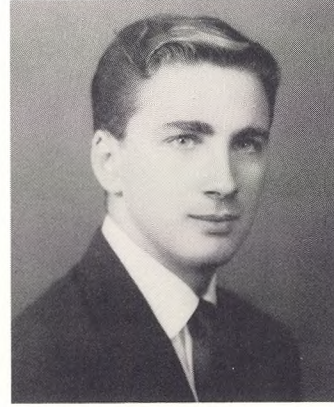
FRANCIS X. McCORMACK



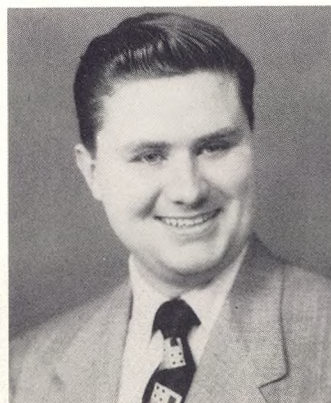
BERNARD K. McQUILLAN



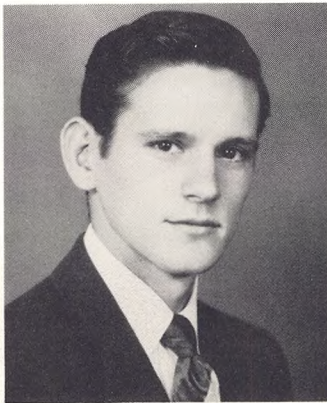
RAYMOND J. MALONEY



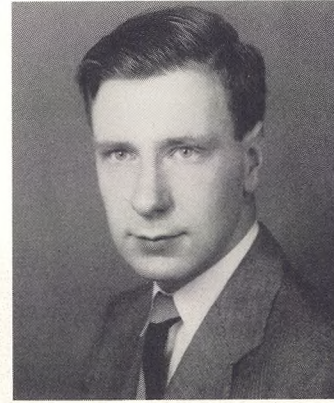
ROY L. REARDON



DONALD G. REGAN



GEORGE H. ROUILLARD



JOHN J. RYAN

ΠΑ

In the year 1906 Pi Alpha Fraternity was founded by eight St. Francis students whose twofold purpose was the promotion of friendship and loyalty. The first Archon was Father Owen J. Smith.

For almost half a century the men of Pi Alpha have been true to the initial aims of the frat and in that time Pi Alpha has grown to be a part of the tradition of St. Francis College. Indeed when a man is a loyal Pi Alpha brother there can be little question about his loyalty to St. Francis.

To simply say that he's a "regular fellow" is a very adequate description of the average Pi Alpha man who seems to possess an engaging knack of combining school activities, social affairs, and studies.

There is more to Pi Alpha than beer parties and paddle swinging. The frat brothers are always active in their efforts to support college projects. Anyone who has attended a Pi Alpha dance can vouch for the zeal of her members.

